
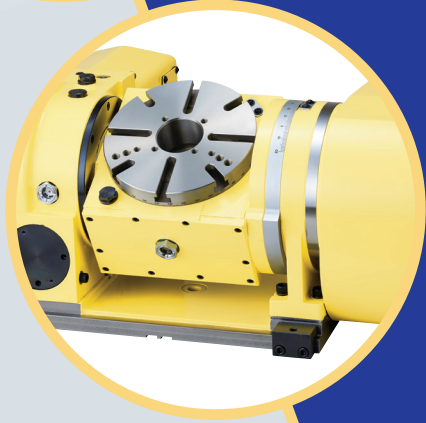
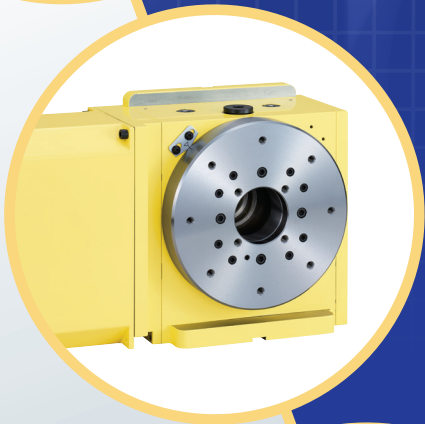
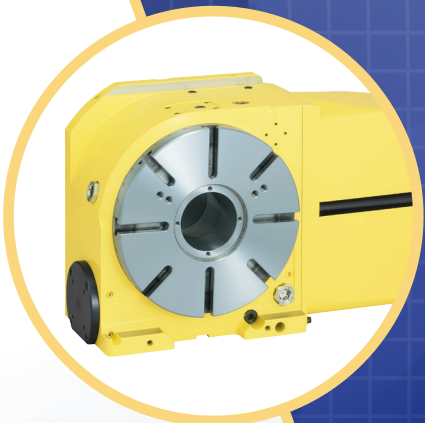


NIKKEN

LN 
LYNDEX-NIKKEN

CNC ROTARY TABLES & BT30 TOOL HOLDERS

For Brother Compact Machining Centers

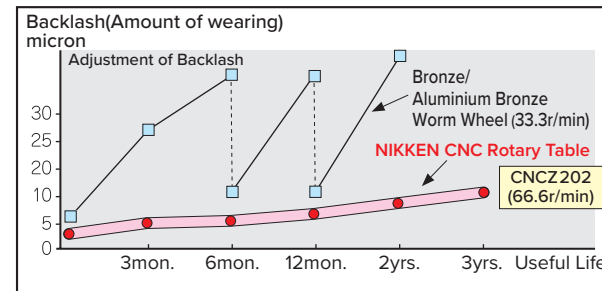
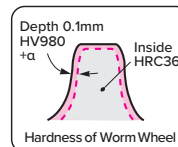


ANTI-WEARING, HIGH RIGIDITY AND HIGH-SPEED ROTATION



WORM WHEEL

Specially hardened and furthermore ion-nitrided on the tooth. Thus, the problem of the sliding friction is solved. The hardness of the tooth surface and inside is shown at right hand side.



It is not exaggeration that the most important parts of the CNC rotary table is worm system. Please choose NIKKEN CNC rotary table with special worm system for our anti-wearing, high rigidity and high speed rotation.

CNC ROTARY TABLE FOR SPEEDIO



The servo motor and the amplifier of the rotary table for **SPEEDIO** are special one only for **SPEEDIO**. The existing servo motors or the amplifiers for BROTHER TAPPING CENTER can not be used.

Please specify the machine name and the layout of the rotary table, when ordering. Standard layout of the rotary table is to install the left-handed rotary table on the left side of the machine.

SPEEDIO S300Xd1 Pg. 4-9	CNC105LSA-BR3
	CNC180LSA-BR3, 202LSA-BR3
	NCT200ELSA-BR3, 200LSA-BR3
	CNC205LSA-BR3 (Trunnion)
	5AX-100SA-BR3
SPEEDIO (S500Xd1 S700Xd1 Pg. 10-19 W1000XD1 Pg. 20-29	DD250LS-50
	NCT200ELSA-BR3, 200LSA-BR3
	CNC180LSA-BR3, 202LSA-BR3
	CNC260PLSA-BR3, 302PLSA-BR3
	5AX-130SA-BR3
SPEEDIO R450Xd1*1 (With Pallet Changer) Pg. 30-35	5AX-201SA-BR3
	CNC205LSA-BR3 (Trunnion)
	DD250LS-50

SPEEDIO R650Xd1*2 (With Pallet Changer) Pg. 36-41	CNC105LSA-BR3
	CNC180LSA-BR3, 202LSA-BR3
	NCT200ELSA-BR3, 200LSA-BR3
	CNC205LSA-BR3 (Trunnion)
	5AX-130BASA-BR3
SPEEDIO R650Xd1*2 (With Pallet Changer) Pg. 36-41	CNC105LSA-BR3
	CNC180LSA-BR3, 202LSA-BR3
	NCT200ELSA-BR3, 200LSA-BR3
	CNC205LSA-BR3 (Trunnion)
	5AX-130BASA-BR3
SPEEDIO R650Xd1*2 (With Pallet Changer) Pg. 36-41	5AX-2MT-105-120SA-BR3

Basically, 2 sets are needed for pallet changer

Please specify the options

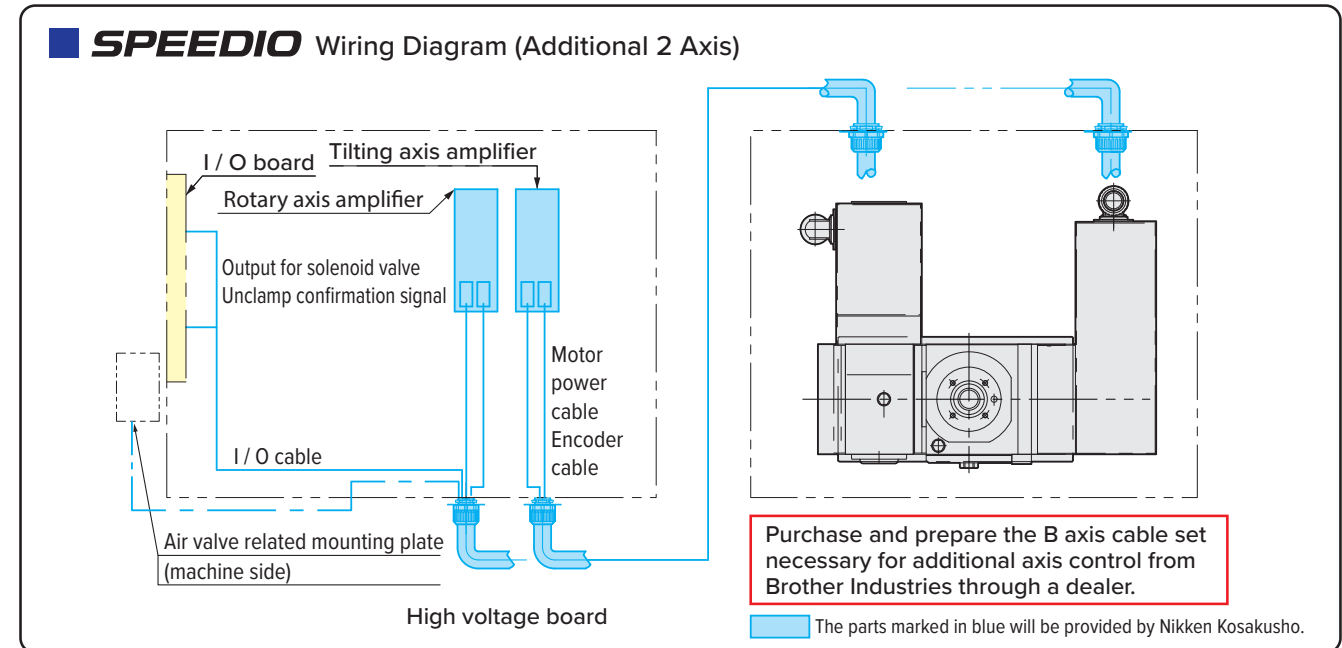
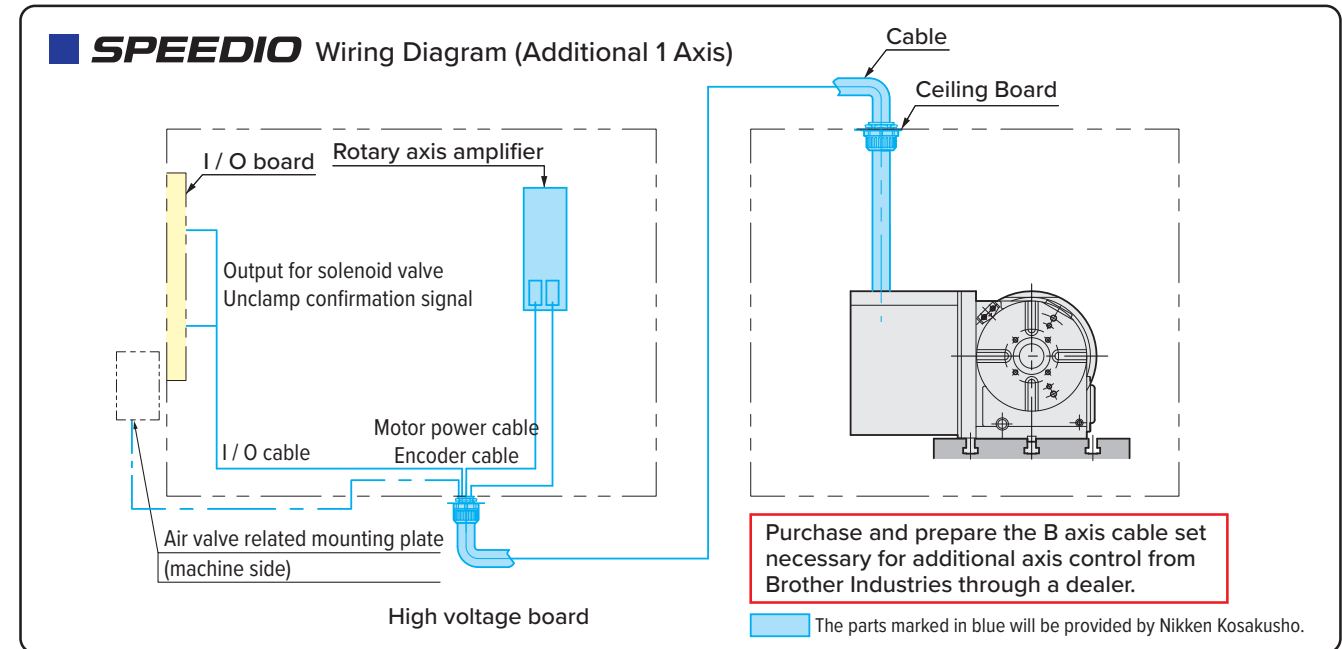
	R450Xd1		R650Xd1	
	Standard	Option	Standard	Option
Swing Dia. (mm)	1,020	1,100	1,250	1,300
JIG Height (mm)	300	380	350	450
Load (kg)	120	200	200	300

* Option can be selected independently.

* It can also support high speed rotation Z series.

CNC ROTARY TABLE WIRING DIAGRAM FOR SPEEDIO

The amplifier, all cables and the rotary table with the suitable servo motor will be supplied from NIKKEN. Installation fee will be charged separately.

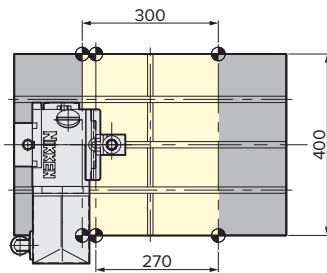


CAUTION

Please note below when using compact machining center **SPEEDIO** abroad.

- When exporting together CNC circular table or rotary inclination table of 1 axis additional axis control, export permission may be required from Ministry of Economy, Trade and Industry Please consult with the distributor.
- If a rotary tilting table is to be exported together with a machine, or if it is to be additionally installed after exporting overseas, an export license may be required by the Ministry of Economy, Trade and Industry, so please consult with the distributor.

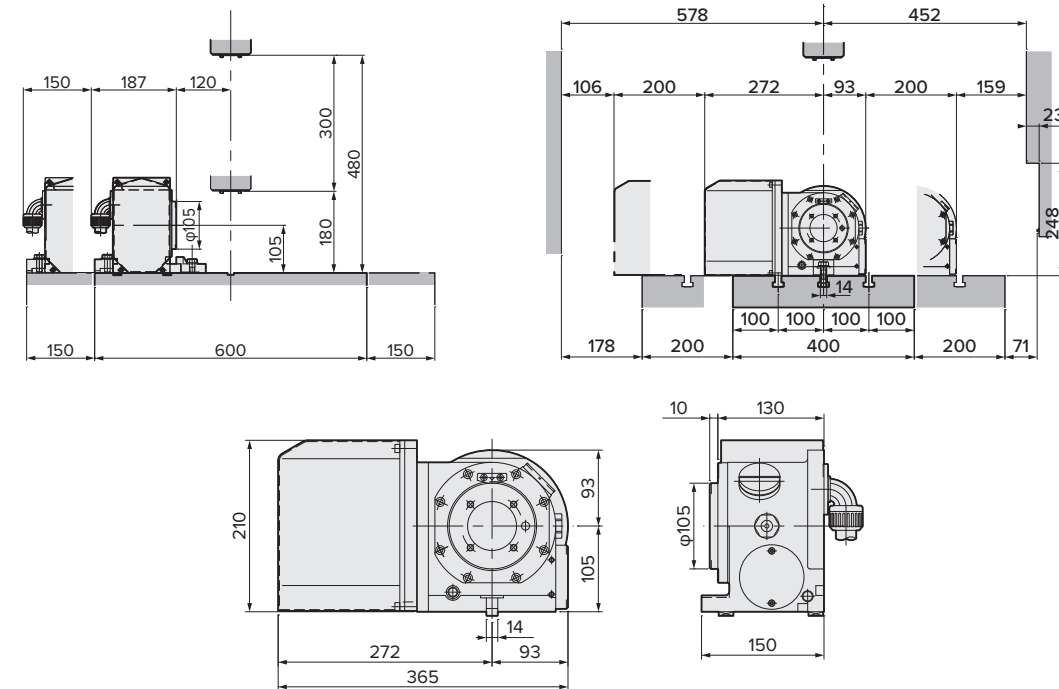
CNC105LSA-BR3



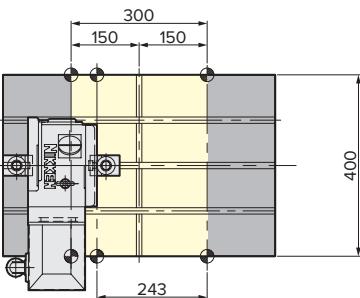
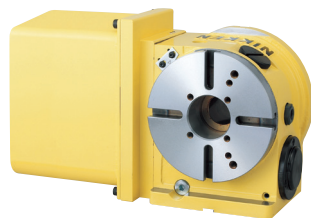
φ105mm type CNC ROTARY TABLE

- Diameter of Table:** φ105mm
- MAX. Work Load:** 30kg
- MAX. Rotation Speed:** 33.3 (r/min), 66.6 (r/min) *1
- Indexing Accuracy:** ±30sec.
- Brake Torque:** 205Nm
- Net Weight:** 30kg
- Servo Motor:** R2AAB8100HXRGA
- Spindle Hole:** φ60mmH7Xφ30mm Through Hole

*1: High speed Z series



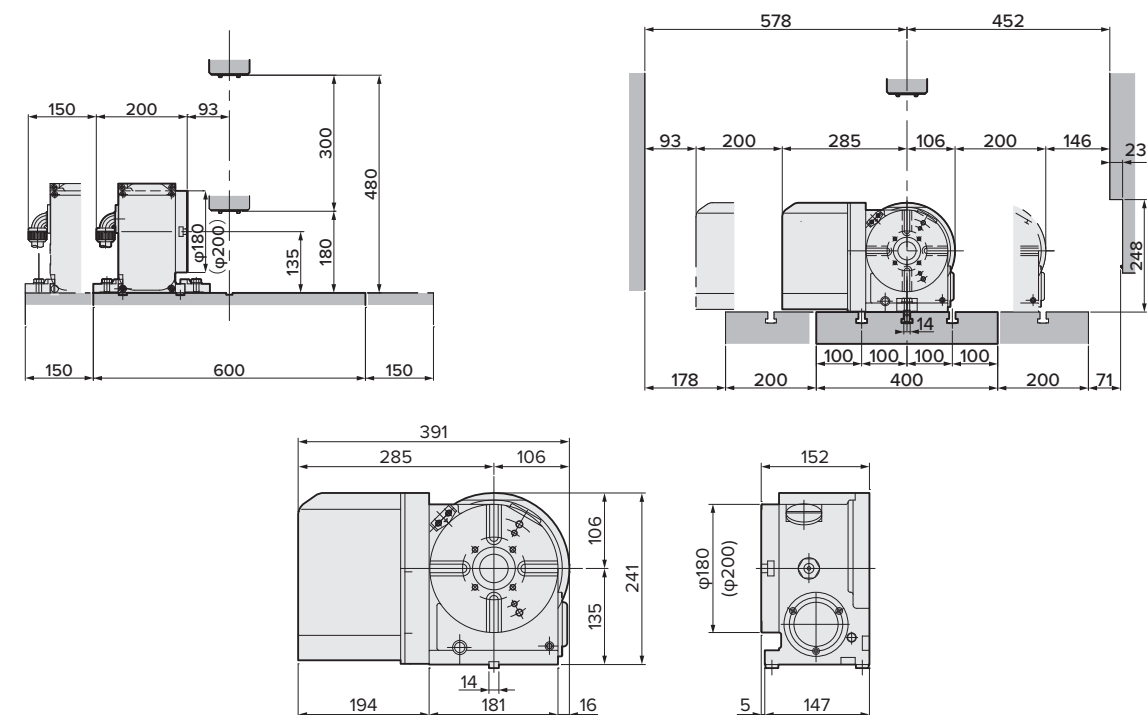
CNC180LSA-BR3



φ180mm type CNC ROTARY TABLE

- Diameter of Table:** φ180mm
- MAX. Work Load:** 100kg (Vertical) 200kg (Horizontal)
- MAX. Rotation Speed:** 33.3 (r/min), 66.6 (r/min) *1
- Indexing Accuracy:** ±20sec.
- Brake Torque:** 303Nm
- Net Weight:** 48kg
- Servo Motor:** R2AAB8100HXRGA
- Spindle Hole:** φ60mmH7Xφ40mm Through Hole

*1: High speed Z series



CNC202LSA-BR3 is also available

Please contact Lyndex-Nikken to confirm Brother / Nikken Rotary Table working envelope. Drawings are subject to change.

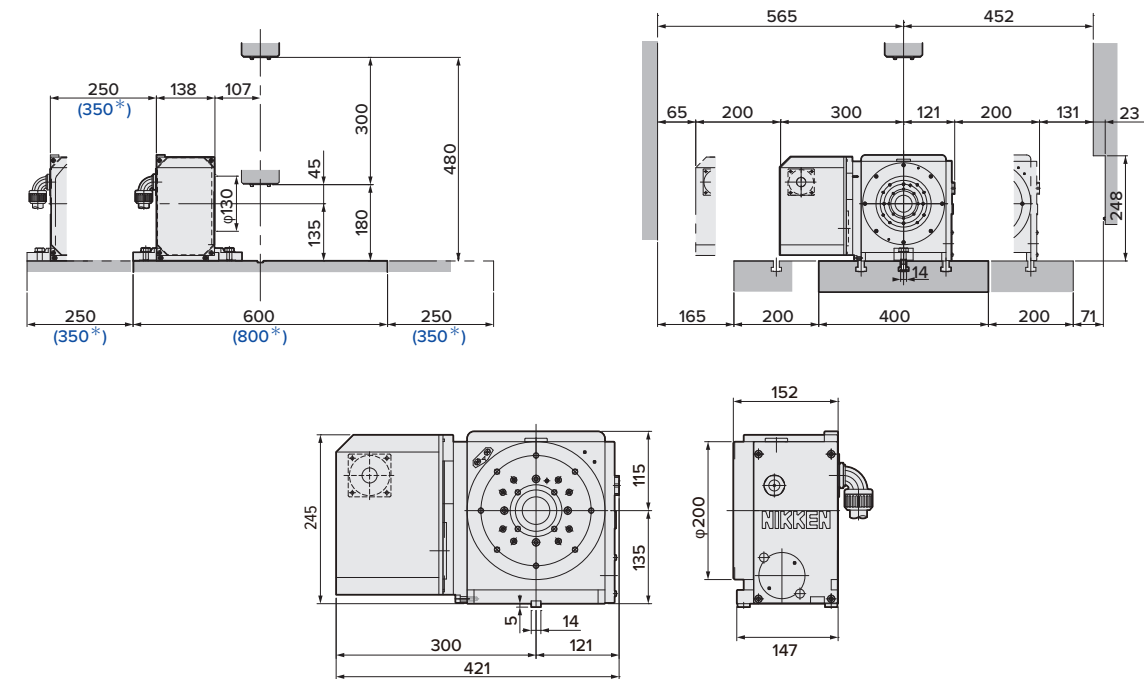
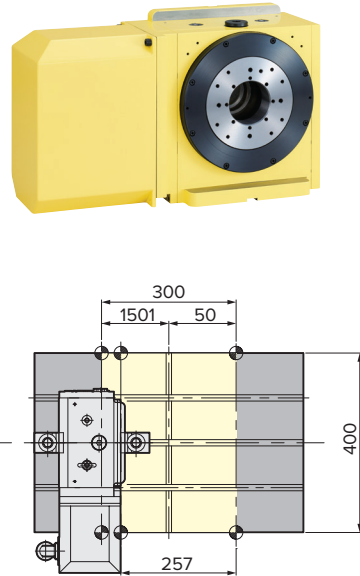
NCT200ELSA-BR3

(Without $\phi 200$ faceplate)

$\phi 200$ mm type NCT ROTARY TABLE

- Diameter of Table:** $\phi 130$ mm
- MAX. Work Load:** 100kg (Vertical) 200kg (Horizontal)
- MAX. Rotation Speed:** 33.3 (r/min), 66.6 (r/min) *1
- Indexing Accuracy:** ± 20 sec.
- Brake Torque:** 900Nm
- Net Weight:** 62kg
- Servo Motor:** R2AAB8100HXRGA
- Spindle Hole:** $\phi 60$ mmH7 X $\phi 40$ mm Through Hole

* 1: High speed Z series

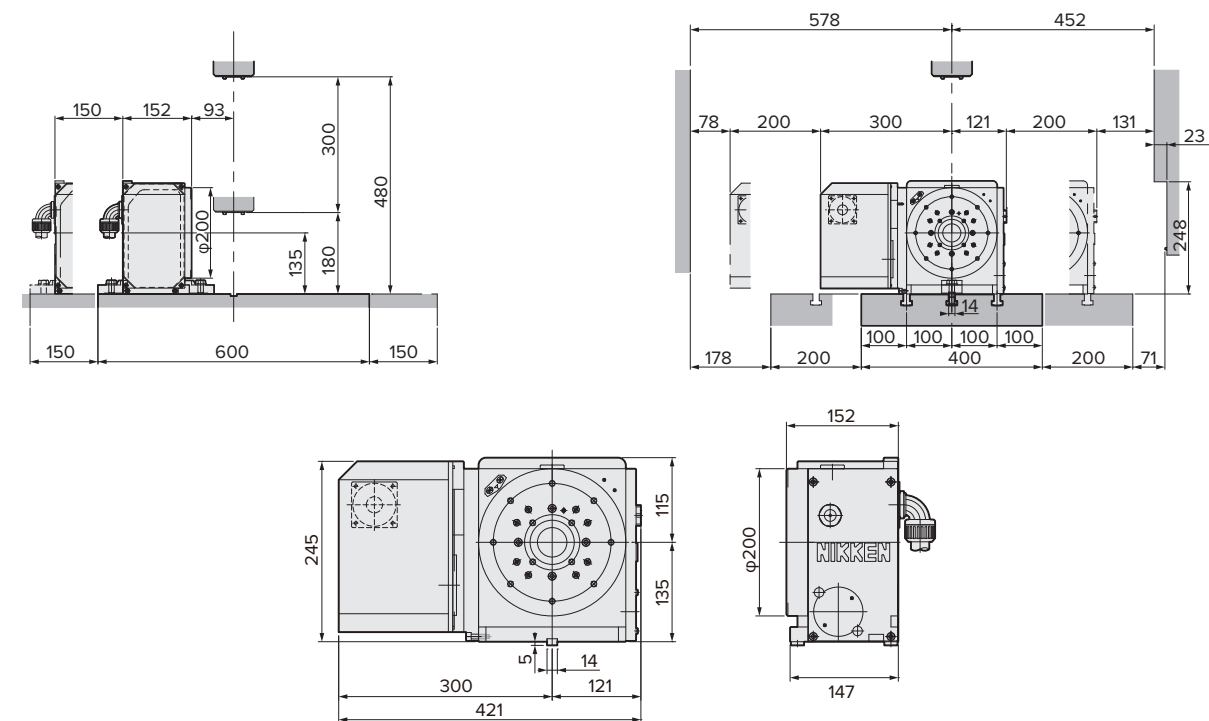
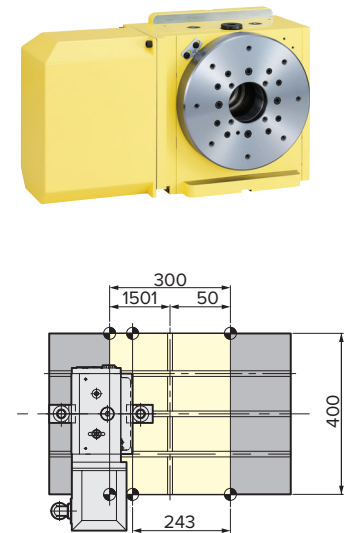


NCT200LSA-BR3

$\phi 200$ mm type NCT ROTARY TABLE

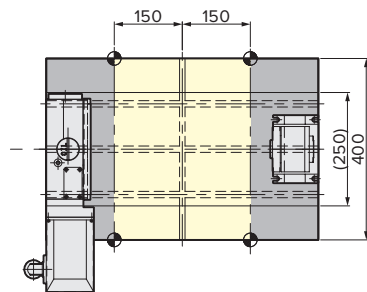
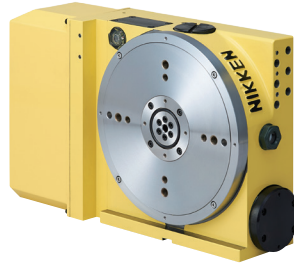
- Diameter of Table:** $\phi 200$ mm
- MAX. Work Load:** 100kg (Vertical) 200kg (Horizontal)
- MAX. Rotation Speed:** 33.3 (r/min), 66.6 (r/min) *1
- Indexing Accuracy:** ± 20 sec.
- Brake Torque:** 900Nm
- Net Weight:** 65kg
- Servo Motor:** R2AAB8100HXRGA
- Spindle Hole:** $\phi 60$ mmH7 X $\phi 40$ mm Through Hole

* 1: High speed Z series
T-slotted face plate available



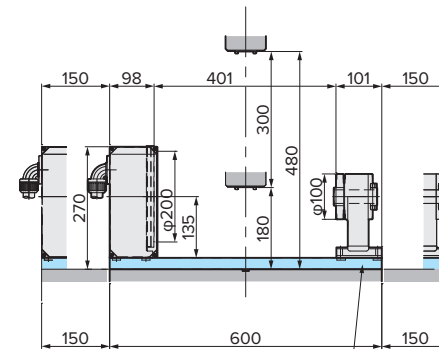
Please contact Lyndex-Nikken to confirm Brother / Nikken Rotary Table working envelope. Drawings are subject to change.

CNC205LSA-BR3 (CST100-135) Trunnion type Table

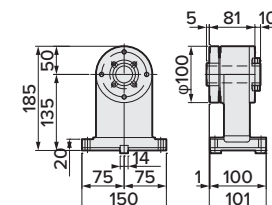
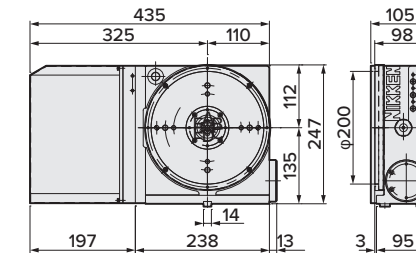
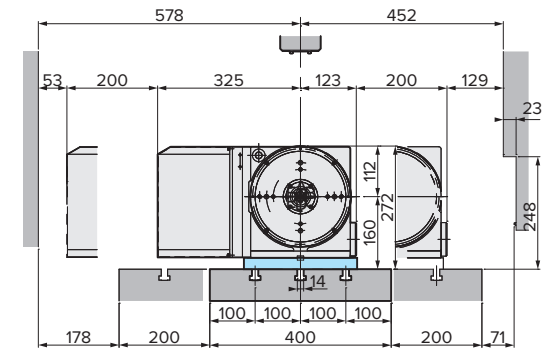


φ200mm slim type CNC ROTARY TABLE

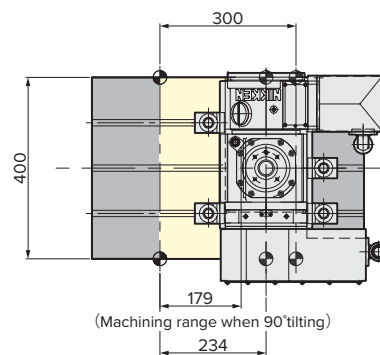
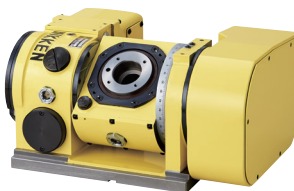
- Diameter of Table:** φ200mm
- MAX. Work Load:** 100kg (with support table)
- MAX. Rotation Speed:** 33.3 (r/min), 66.6 (r/min) *1
- Indexing Accuracy:** ±20sec.
- Brake Torque:** 380Nm
- Net Weight:** 45kg
- Servo Motor:** R2AAB8100HXRGA
- Spindle Hole:** 6 ports built rotary joint can be fitted
- *1: High speed Z series



NIKKEN doesn't provide the plate

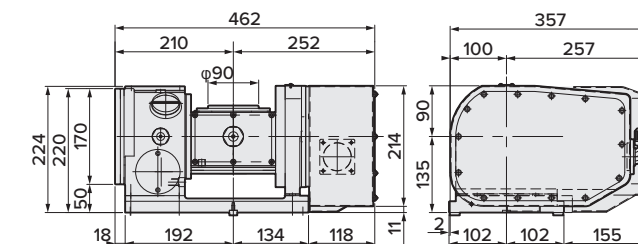
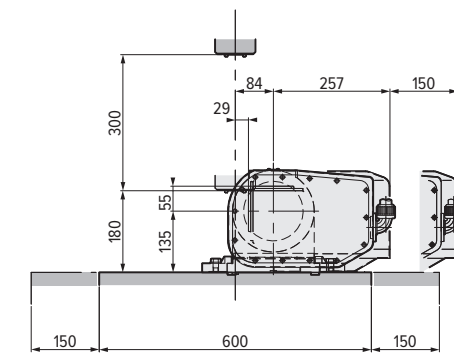
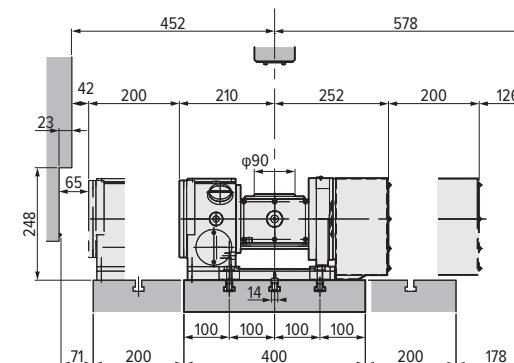


5AX-100SA-BR3



φ100mm compact type 5AX-TILTING ROTARY TABLE

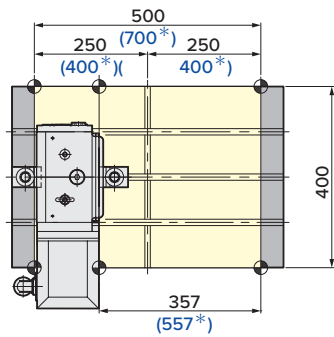
- Diameter of Table:** φ90mm
- MAX. Work Load:** 20kg (Vertical) 40kg (Horizontal)
- MAX. Rotation Speed:** 44.4 (r/min) (Rotary), 22.2 (r/min) (Tilting)
- Indexing Accuracy:** ±30sec. (Rotary), 60sec. (Tilting)
- Brake Torque:** 205Nm (Rotary), 600Nm (Tilting)
- Net Weight:** 84kg
- Servo Motor:** R2AD08040FXR5E (Rotary)
R2AD08040FXR5E (Tilting)
- Spindle Hole:** φ50mmH7 X φ30mm Through Hole
- Tilting Angle:** 0°~105°



Please contact Lyndex-Nikken to confirm Brother / Nikken Rotary Table working envelope. Drawings are subject to change.

NCT200ELSA-BR3

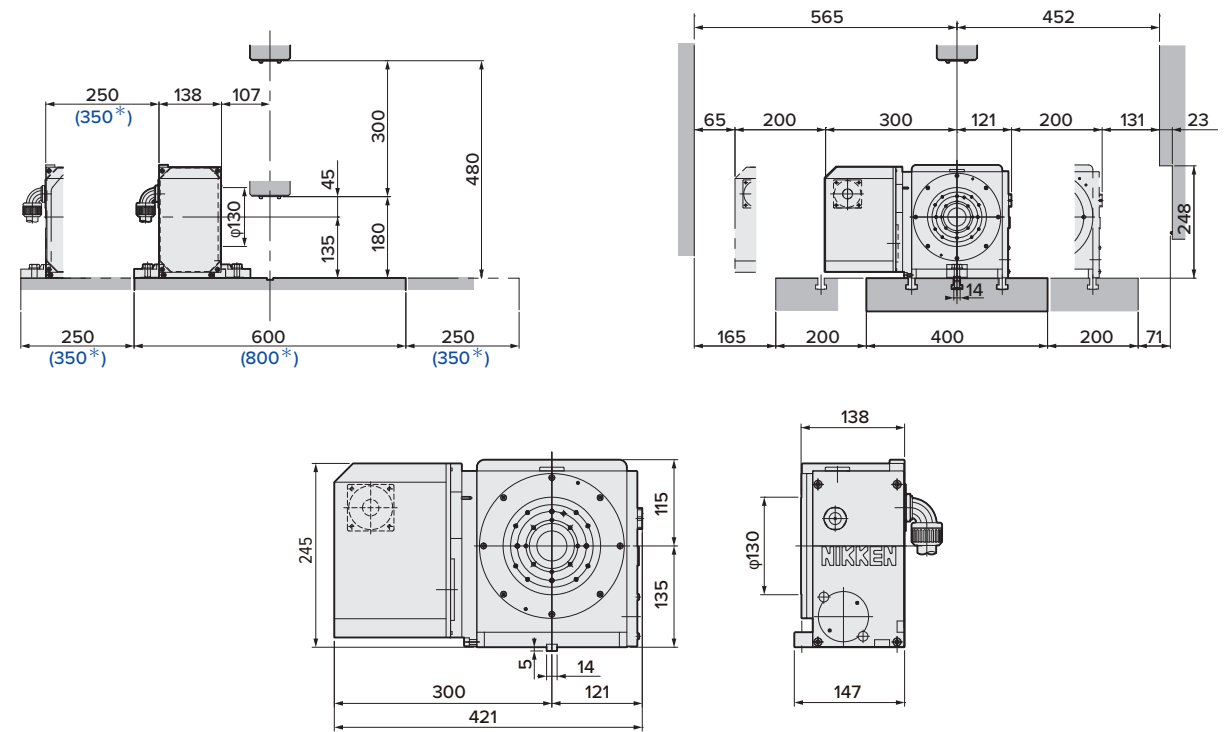
(Without $\phi 200$ faceplate)



$\phi 200$ mm type NCT ROTARY TABLE

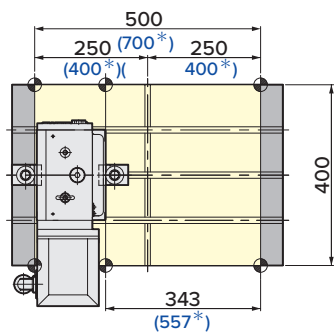
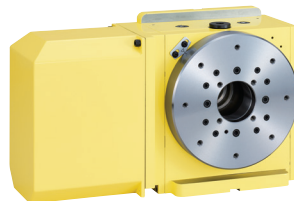
- Diameter of Table:** $\phi 130$ mm
- MAX. Work Load:** 100kg (Vertical) 200kg (Horizontal)
- MAX. Rotation Speed:** 33.3 (r/min), 66.6 (r/min) *1
- Indexing Accuracy:** ± 20 sec.
- Brake Torque:** 900Nm
- Net Weight:** 62kg
- Servo Motor:** R2AAB8100HXRGA
- Spindle Hole:** $\phi 60$ mmH7 X $\phi 40$ mm Through Hole

*1: High speed Z series



(*) The figures with blue color are the figures for **S700Xd1**.

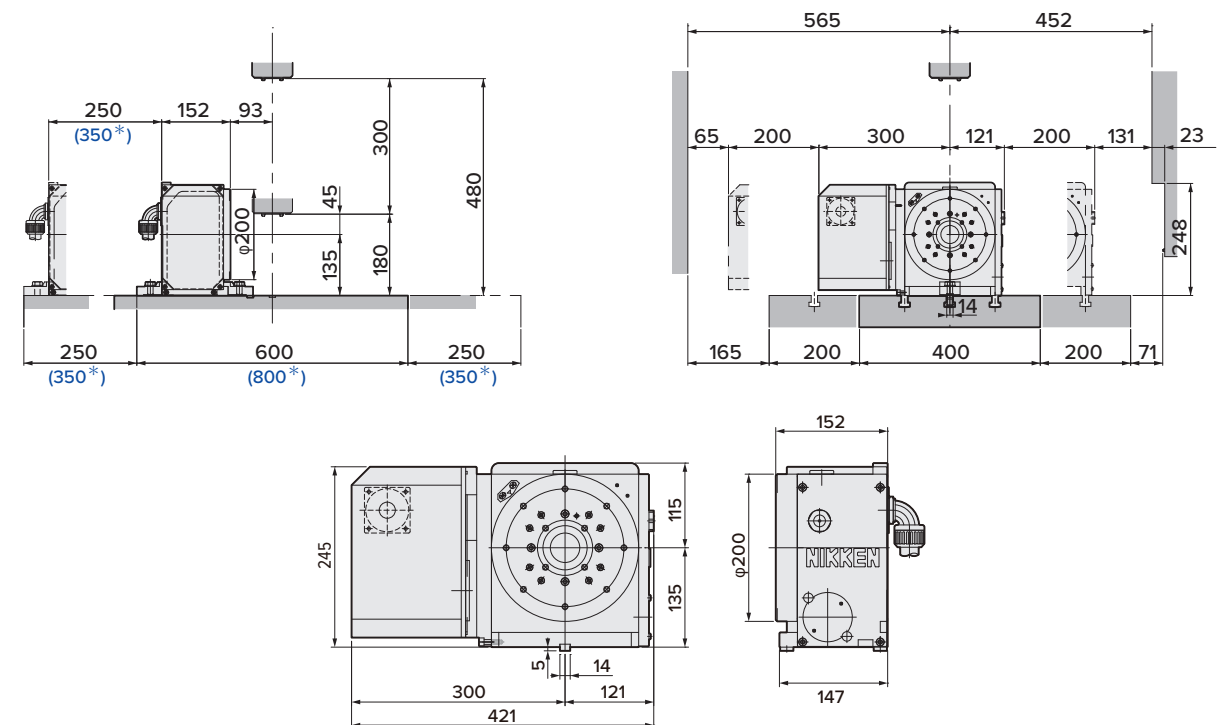
NCT200LSA-BR3



$\phi 200$ mm type NCT ROTARY TABLE

- Diameter of Table:** $\phi 200$ mm
- MAX. Work Load:** 100kg (Vertical) 200kg (Horizontal)
- MAX. Rotation Speed:** 33.3 (r/min), 66.6 (r/min) *1
- Indexing Accuracy:** ± 20 sec.
- Brake Torque:** 900Nm
- Net Weight:** 65kg
- Servo Motor:** R2AAB8100HXRGA
- Spindle Hole:** $\phi 60$ mmH7 X $\phi 40$ mm Through Hole

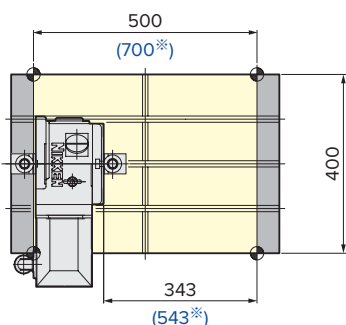
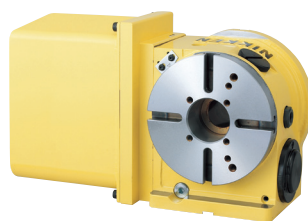
*1: High speed Z series
T-slotted face plate available



(*) The figures with blue color are the figures for **S700Xd1**.

Please contact Lyndex-Nikken to confirm Brother / Nikken Rotary Table working envelope. Drawings are subject to change.

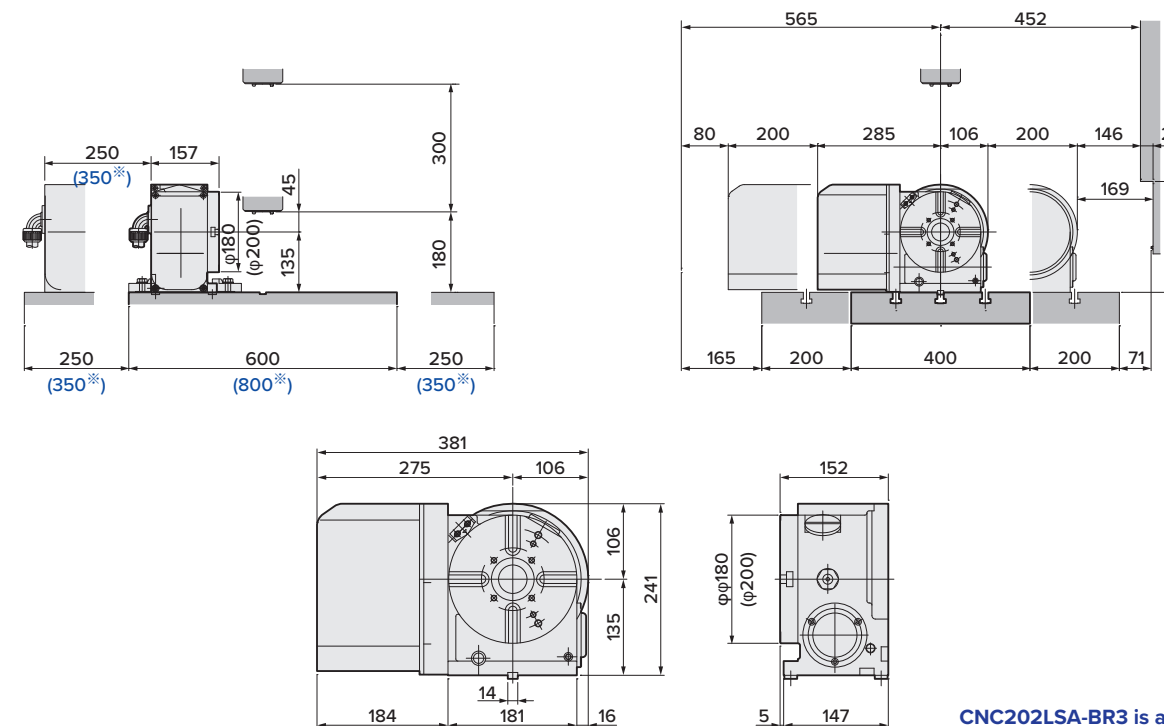
CNC180LSA-BR3



φ180mm type CNC ROTARY TABLE

- Diameter of Table:** φ180mm
- MAX. Work Load:** 100kg (Vertical) 200kg (Horizontal)
- MAX. Rotation Speed:** 33.3 (r/min), 66.6 (r/min) *1
- Indexing Accuracy:** ±20sec.
- Brake Torque:** 303Nm
- Net Weight:** 48kg
- Servo Motor:** R2AAB8100HXRGA
- Spindle Hole:** φ60mmH7×φ40mm Through Hole

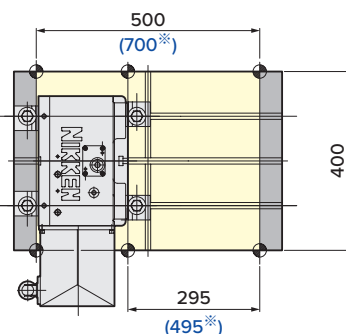
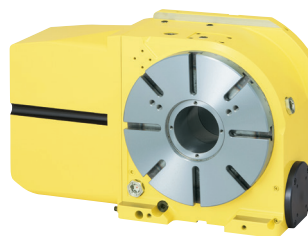
*1: High speed Z series



CNC202LSA-BR3 is also available

(*) The figures with blue color are the figures for S700Xd1.

CNC260PLSA-BR3

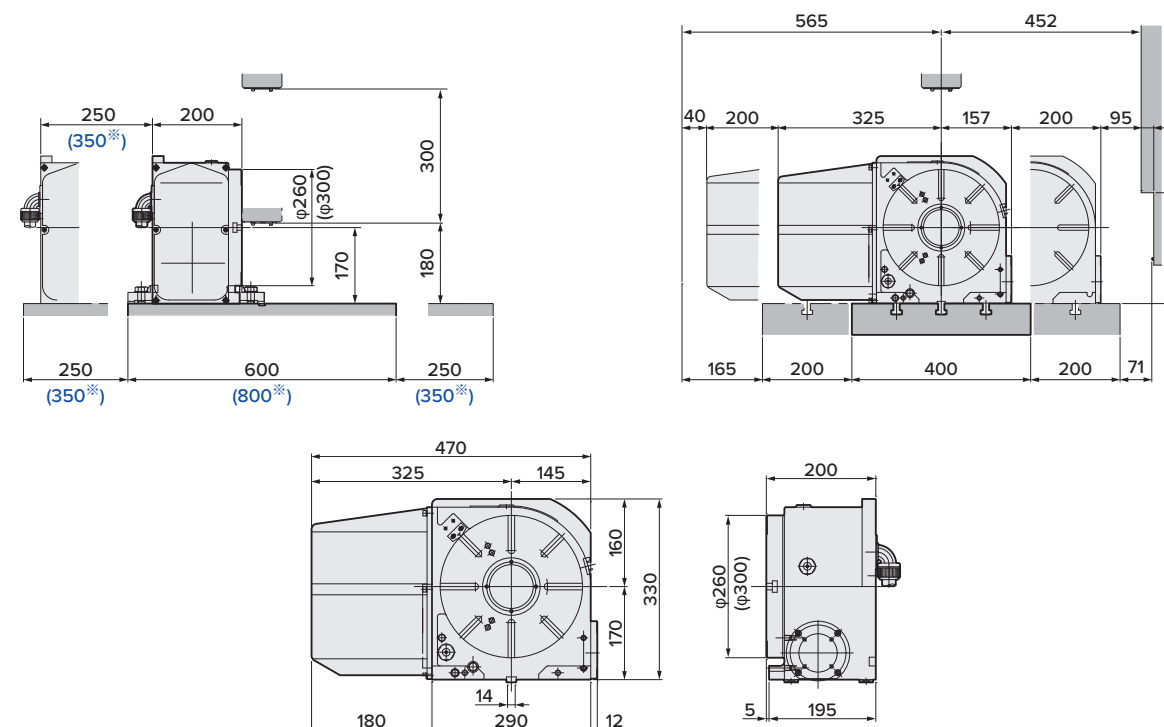


NEW

φ260mm type CNC ROTARY TABLE

- Diameter of Table:** φ260mm
- MAX. Work Load:** 300kg (Vertical) 150kg (Horizontal)
- MAX. Rotation Speed:** 25 (r/min), 50 (r/min) *1
- Indexing Accuracy:** 20sec.
- Brake Torque:** 1430Nm (Pneumatic)
- Net Weight:** 115kg
- Servo Motor:** R2AAB8100HXRGA
- Spindle Hole:** φ80mmH7 Through Hole

*1: High speed Z series

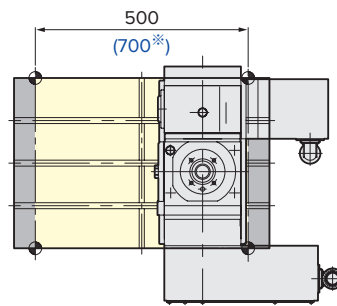
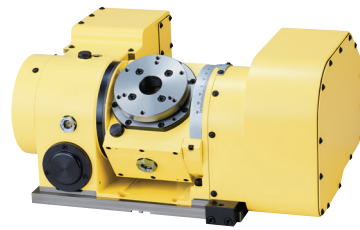


CNC202LSA-BR3 is also available

(*) The figures with blue color are the figures for S700Xd1.

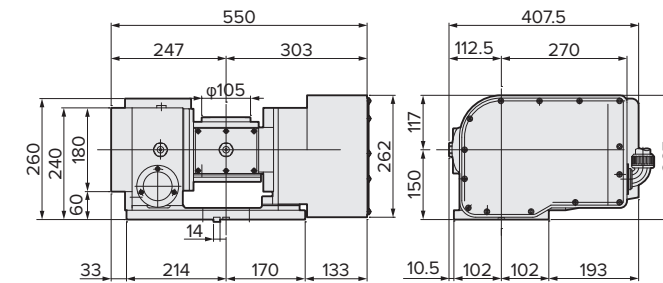
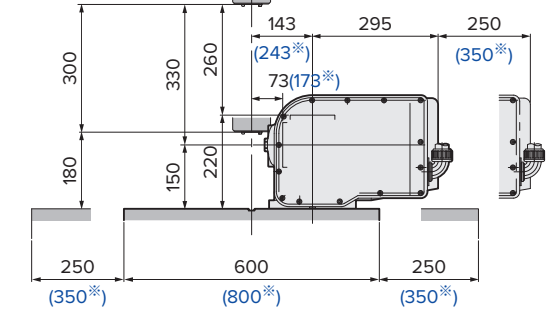
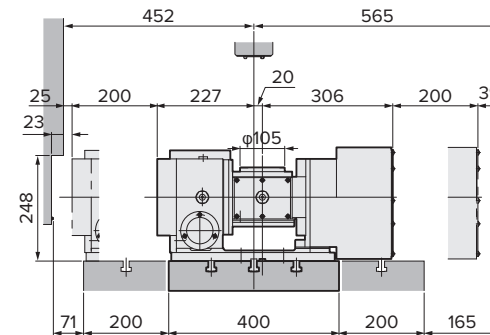
Please contact Lyndex-Nikken to confirm Brother / Nikken Rotary Table working envelope. Drawings are subject to change.

5AX-130SA-BR3



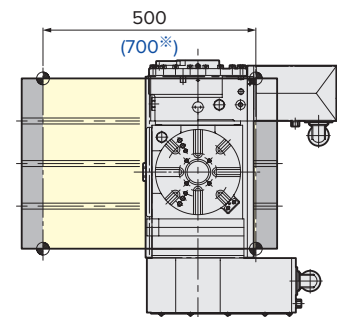
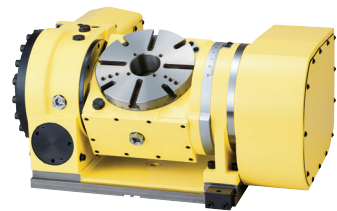
φ130mm type 5AX- TILTING ROTARY TABLE

- Diameter of Table:** φ105mm (With φ130mm sub table)
- MAX. Work Load:** 25kg (Vertical) 50kg (Horizontal)
- MAX. Rotation Speed:** 22.2 (r/min) (Rotary), 11.1 (r/min) (Tilting)
- Indexing Accuracy:** ±30sec. (Rotary), 60sec. (Tilting)
- Brake Torque:** 205Nm (Rotary), 303Nm (Tilting)
- Net Weight:** 115kg
- Servo Motor:** R2AAB8100HXRGA (Rotary)
R2AAB8100HXRGA (Tilting)
- Spindle Hole:** φ60mmH7 X φ30mm Through Hole
- Tilting Angle:** 0°~105°



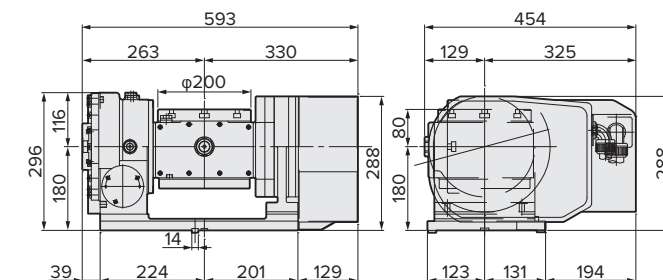
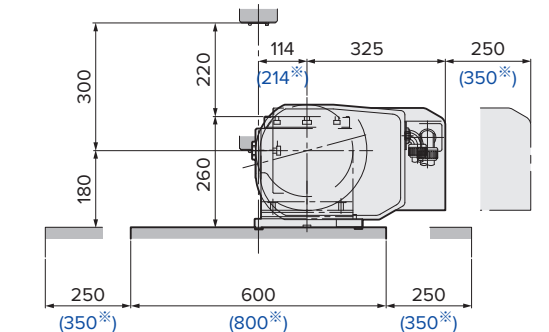
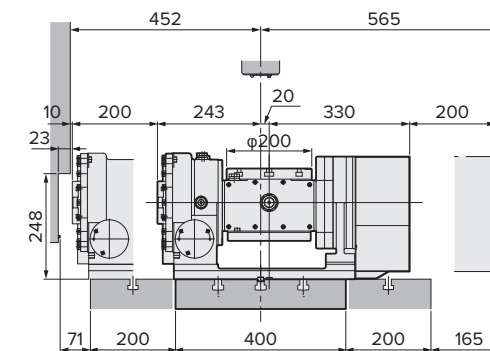
(*) The figures with blue color are the figures for **S700Xd1**.

5AX-201SA-BR3



φ200mm type 5AX- TILTING ROTARY TABLE

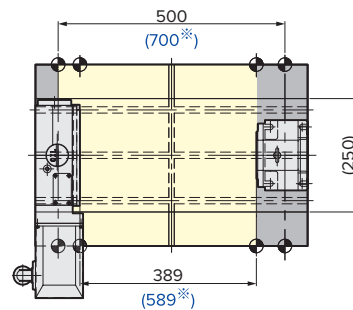
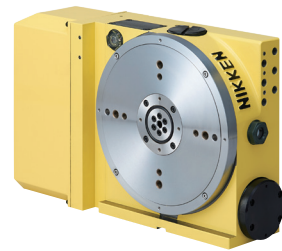
- Diameter of Table:** φ200mm
- MAX. Work Load:** 40kg (Vertical) 60kg (Horizontal)
- MAX. Rotation Speed:** 22.2 (r/min) (Rotary), 16.6 (r/min) (Tilting)
- Indexing Accuracy:** ±15sec. (Rotary), 60sec. (Tilting)
- Brake Torque:** 588Nm (Rotary), 608Nm (Tilting) (Hydraulic)
303Nm (Rotary), 303Nm (Tilting) (Pneumatic)
- Net Weight:** 160kg
- Servo Motor:** R2AAB8100HXRGA (Rotary)
R2AAB8100HXRGA (Tilting)
- Spindle Hole:** φ60mmH7 X φ50mm Through Hole
- Tilting Angle:** 0°~105°



(*) The figures with blue color are the figures for **S700Xd1**.

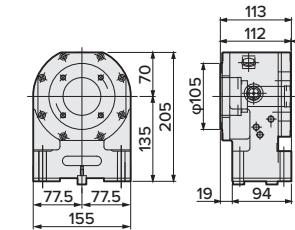
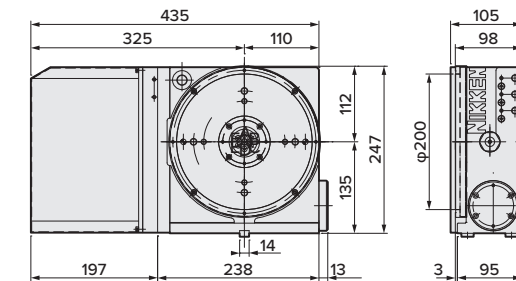
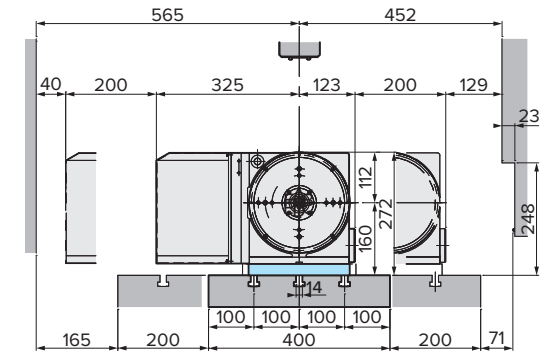
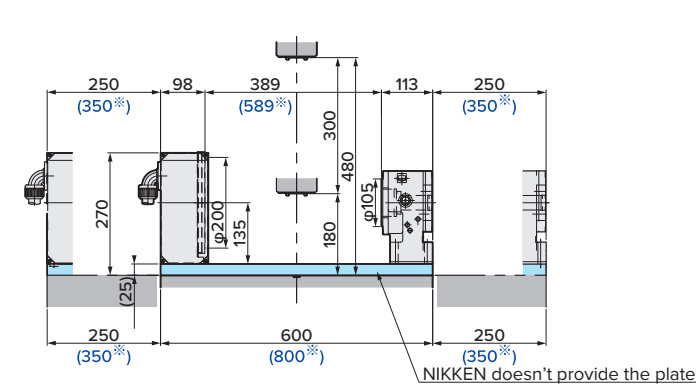
Please contact Lyndex-Nikken to confirm Brother / Nikken Rotary Table working envelope. Drawings are subject to change.

CNC205LSA-BR3 (TAT-105N-135)



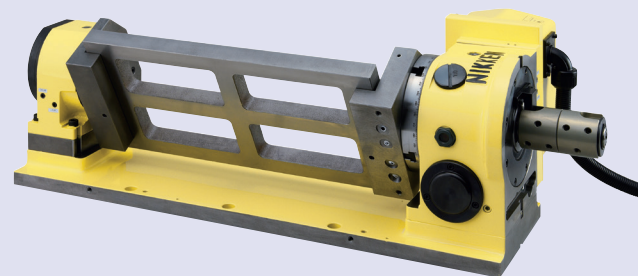
φ200mm Slim type CNC ROTARY TABLE

- Diameter of Table: φ200mm
- MAX. Work Load: 100kg (with support table)
- MAX. Rotation Speed: 33.3 (r/min), 66.6 (r/min) *1
- Indexing Accuracy: ±20sec.
- Brake Torque: 380Nm
- Net Weight: 45kg
- Servo Motor: R2AAB8100HXRGA
- 6 ports built rotary joint can be fitted

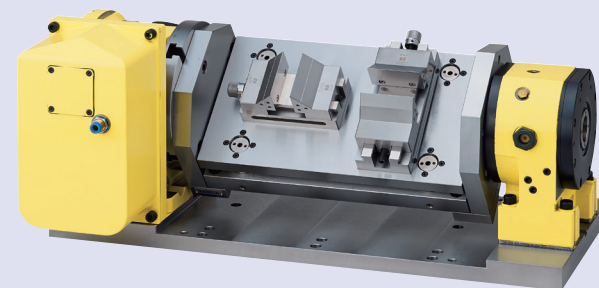


(*) The figures with blue color are the figures for S700Xd1.

CNC Rotary Table & Support Table with Jig Fixture

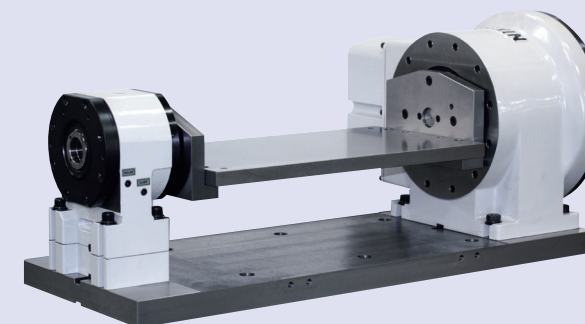


CNC180L (with 6+1 port Rotary joint) & TAT-105N-135

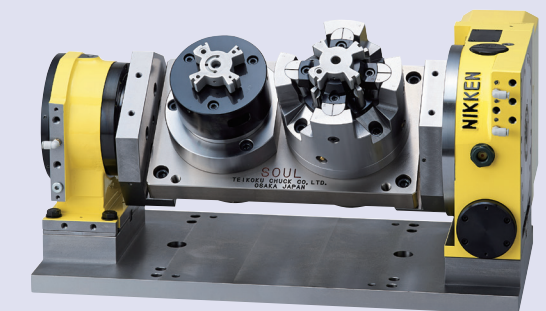


CNC180L & TAT-105N-135 (Precision stock vice)

CNC Rotary Table & Support Table with Jig Fixture



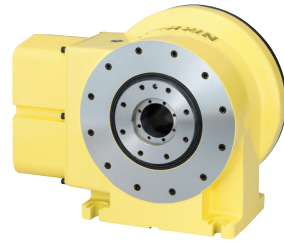
DD250LS-50 & TAT-105N-135



CNC205L & Support table (with power chuck)

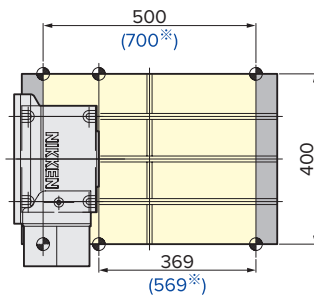
Please contact Lyndex-Nikken to confirm Brother / Nikken Rotary Table working envelope. Drawings are subject to change.

DD250LS-50



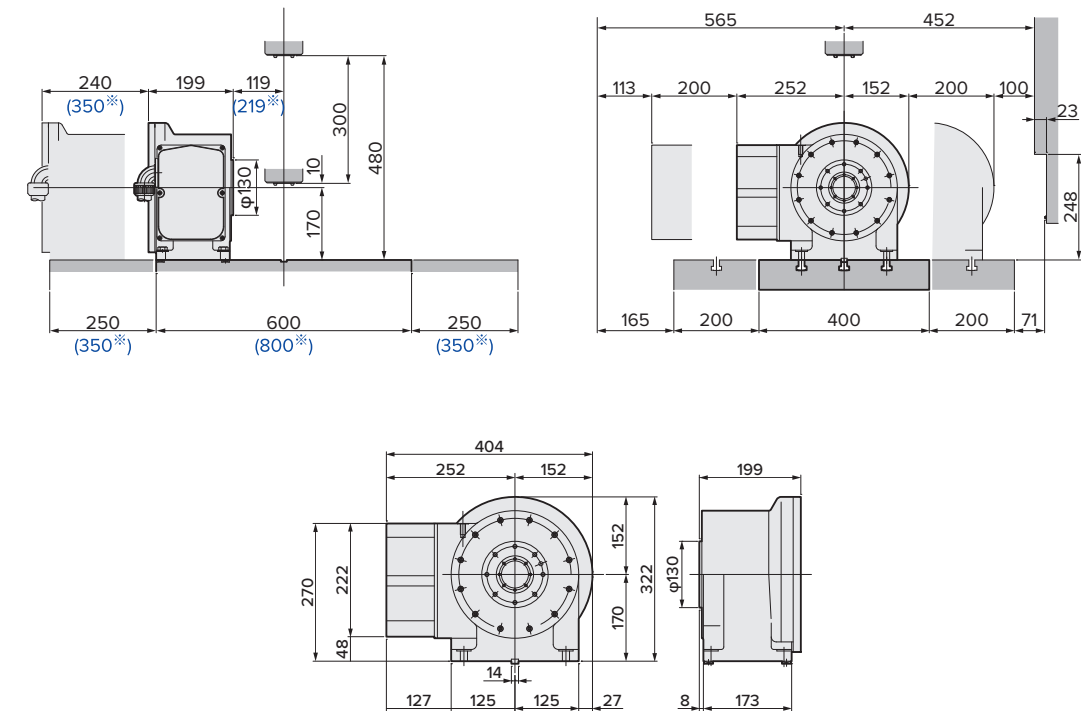
Optional
Accessory:
φ250mm sub
table 6 ports
rotary joint

*The color of DD250L-50 is white as standard.



φ250mm ROTARY TABLE with DD MOTOR

Diameter of Table:	φ250mm (φ250mm sub table: Option)
Spindle External Diameter:	φ130mm
MAX. Rotation Speed:	200 (r/min)
Indexing Accuracy:	15sec.
Brake Torque:	500Nm
Net Weight:	75kg
Servo Motor:	DB23A053021W00
Constant Torque:	50Nm
MAX. Torque:	200Nm
Spindle Hole:	φ53mmH7 Through Hole



(*) The figures with blue color are the figures for S700Xd1.

Notes on the Use of DD TABLES

DD Table Characteristics

The spindle is linked directly to the motor for excellent responsiveness. As a trade-off for this responsiveness, the system is very sensitive to external force and loads, so it is necessary to set suitable parameters for each application.

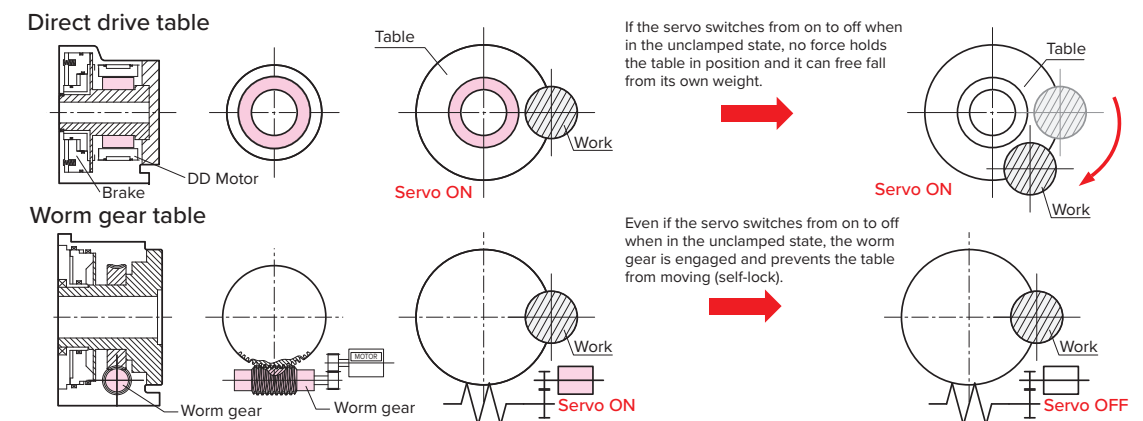
Adjustment is necessary to perform 5-axis simultaneous machining (synchronized machining). The NIKKEN standard parameters can be used for indexing and positioning. After confirming that optional functions* for synchronized machining are available, it is necessary to make appropriate settings to satisfy the customer's machining time and machining precision requirements. For simultaneous operation, suitable settings must be made to align the 4th (5th) axis with the three basic axes (XYZ).

Clamping Operation

Due to the characteristics of the DD table it can be turned easily by hand if power is not being supplied (free run state). The table will again be in the free run state when the servo turns off after the brake is applied, unless appropriate settings are made, and this can cause positioning inaccuracy.

Notes on the Use of DD TABLES

Difference in structure between Direct Drive and Worm Gear System



Please contact Lyndex-Nikken to confirm Brother / Nikken Rotary Table working envelope. Drawings are subject to change.

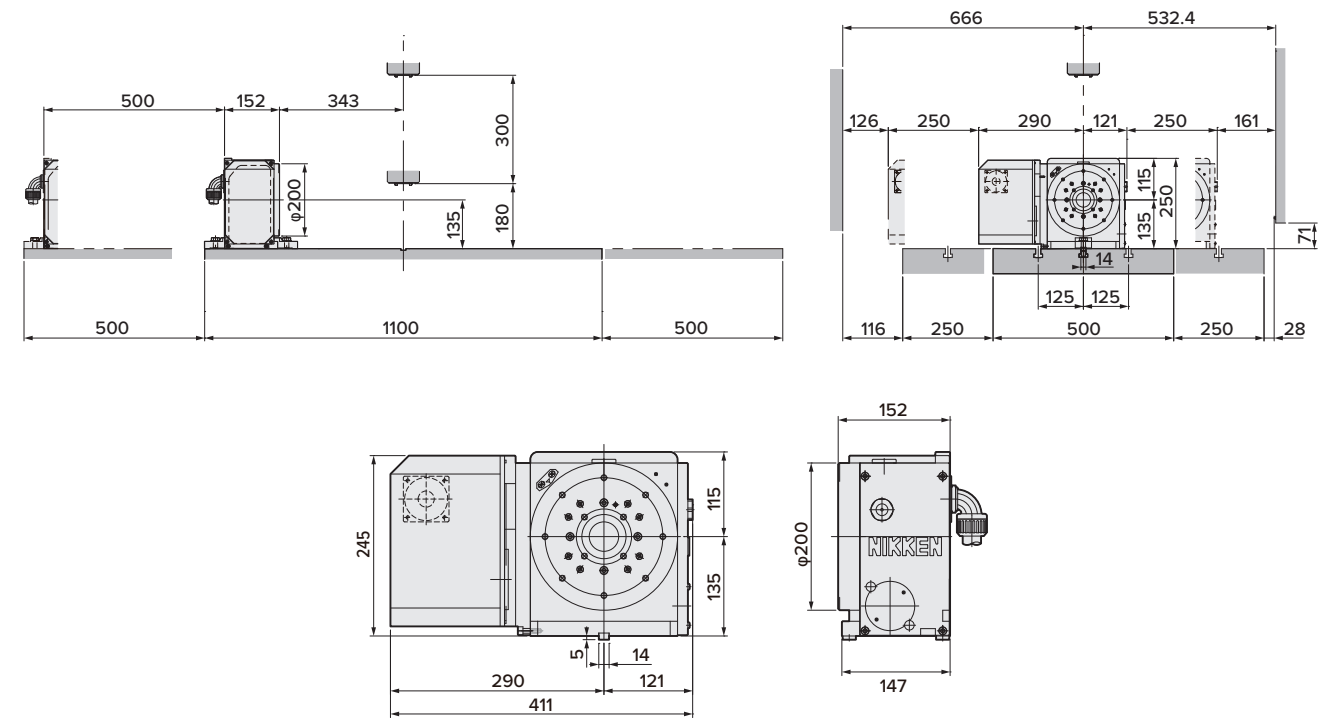
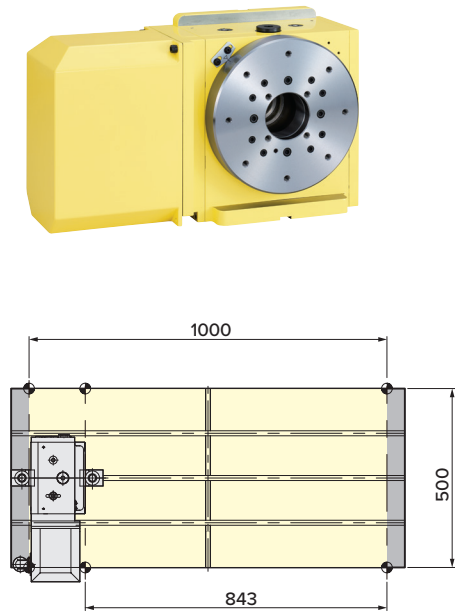
NCT200LSA-BR3

(Without $\phi 200$ faceplate)

$\phi 200$ mm type NCT ROTARY TABLE

- Diameter of Table:** $\phi 130$ mm
- MAX. Work Load:** 100kg (Vertical) 200kg (Horizontal)
- MAX. Rotation Speed:** 33.3 (r/min), 66.6 (r/min) *1
- Indexing Accuracy:** ± 20 sec.
- Brake Torque:** 900Nm
- Net Weight:** 62kg
- Servo Motor:** R2AAB8100HXRGA
- Spindle Hole:** $\phi 60$ mmH7 X $\phi 40$ mm Through Hole

*1: High speed Z series

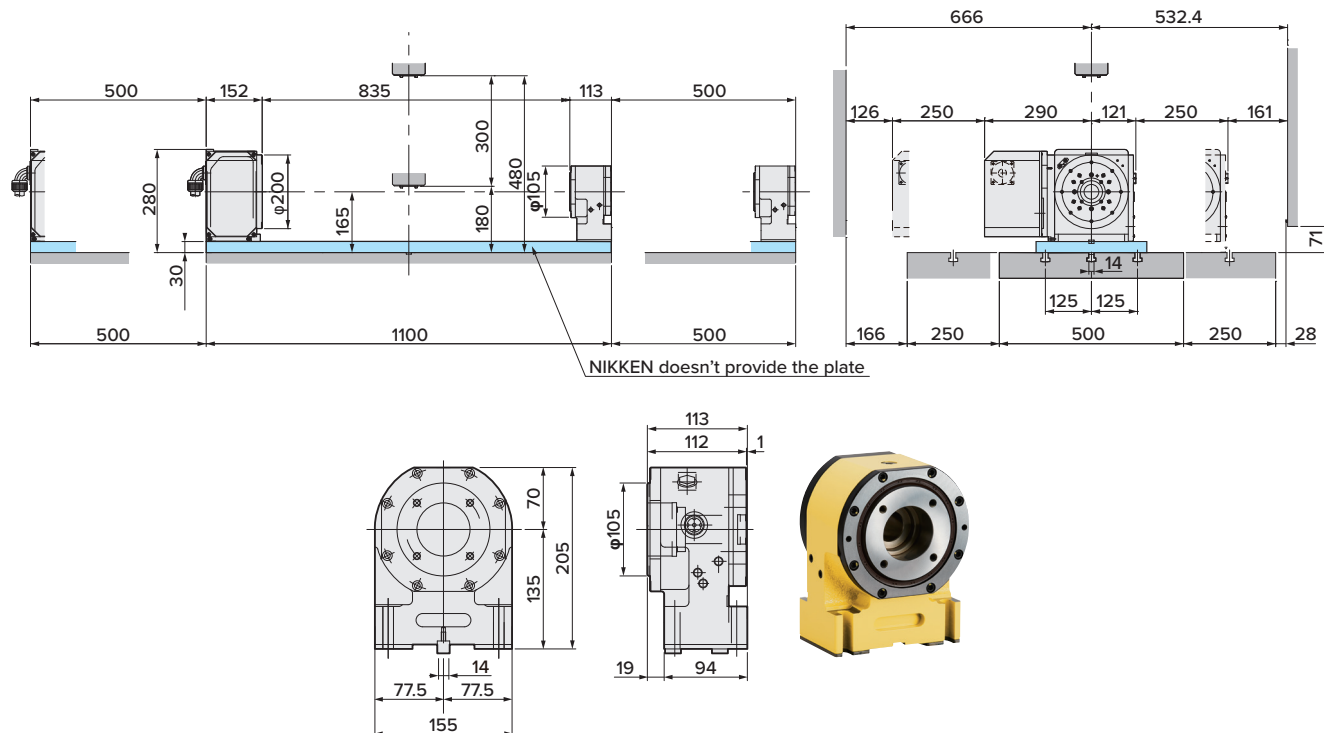
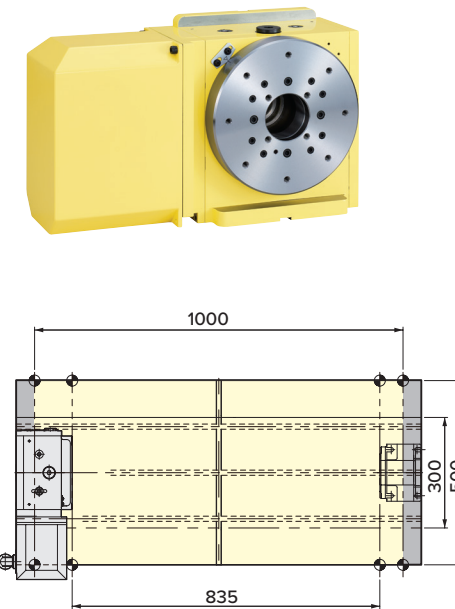


NCT200LSA-BR3 (TAT-105N-135)

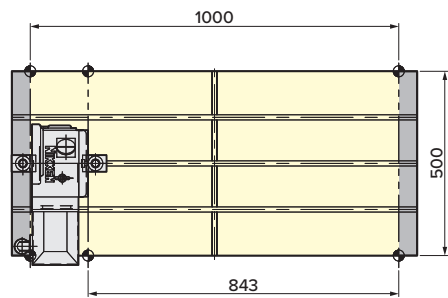
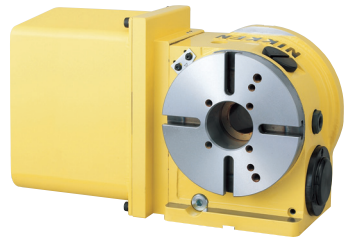
$\phi 200$ mm type NCT ROTARY TABLE

- Diameter of Table:** $\phi 200$ mm
- MAX. Work Load:** 100kg (Vertical) 200kg (Horizontal)
- MAX. Rotation Speed:** 33.3 (r/min), 66.6 (r/min) *1
- Indexing Accuracy:** ± 20 sec.
- Brake Torque:** 900Nm
- Net Weight:** 65kg
- Servo Motor:** R2AAB8100HXRGA
- Spindle Hole:** $\phi 60$ mmH7 X $\phi 40$ mm Through Hole

*1: High speed Z series
T-slotted face plate available



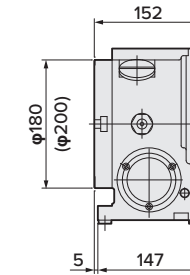
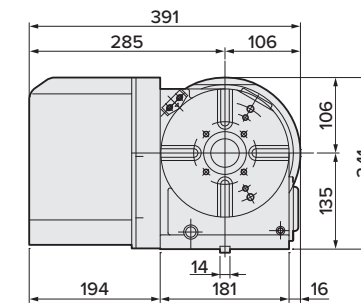
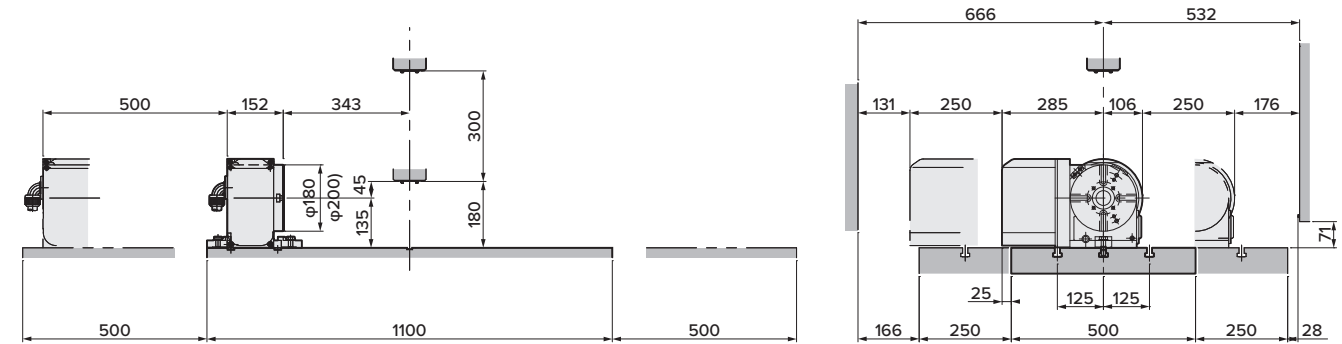
CNC180LSA-BR3



φ180mm type CNC ROTARY TABLE

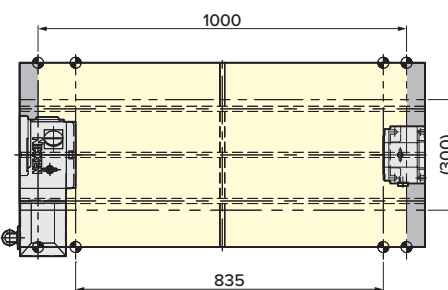
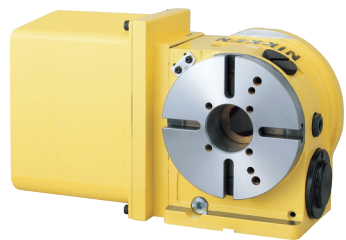
- Diameter of Table:** φ180mm (φ200mm)
- MAX. Work Load:** 100kg (Vertical) 200kg (Horizontal)
- MAX. Rotation Speed:** 33.3 (r/min), 66.6 (r/min) *1
- Indexing Accuracy:** ±20sec.
- Brake Torque:** 303Nm
- Net Weight:** 48kg
- Servo Motor:** R2AAB8100HXRGA
- Spindle Hole:** φ60mmH7×φ40mm Through Hole

*1: High speed Z series



CNC202LSA-BR3 is also available

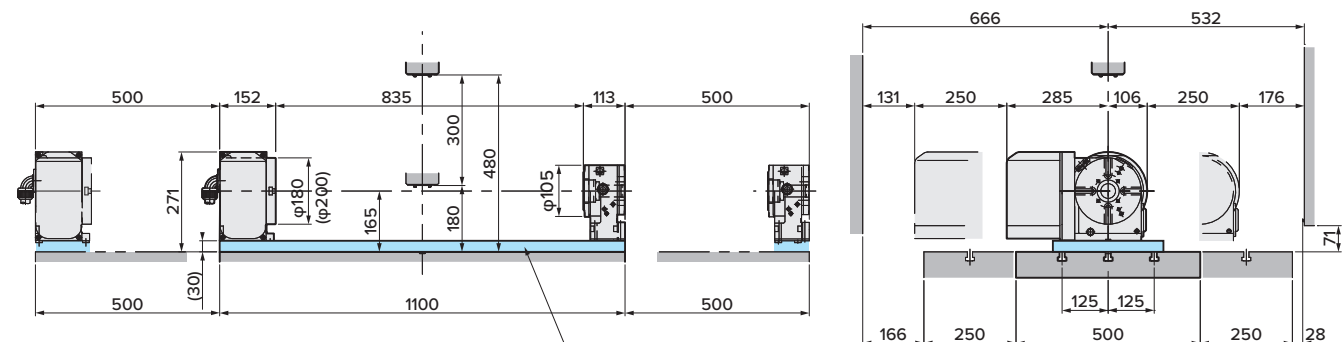
CNC180LSA-BR3 (TAT-105N-135)



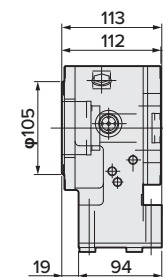
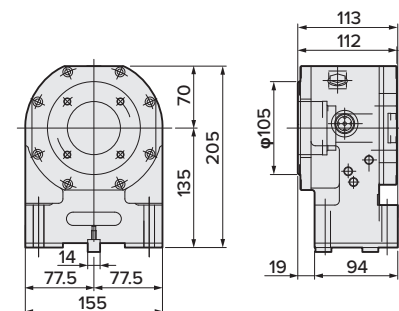
φ180mm type CNC ROTARY TABLE

- Diameter of Table:** φ180mm (φ200mm)
- MAX. Work Load:** 100kg (Vertical) 200kg (Horizontal)
- MAX. Rotation Speed:** 33.3 (r/min), 66.6 (r/min) *1
- Indexing Accuracy:** ±20sec.
- Brake Torque:** 303Nm
- Net Weight:** 48kg
- Servo Motor:** R2AAB8100HXRGA
- Spindle Hole:** φ60mmH7×φ40mm Through Hole

*1: High speed Z series

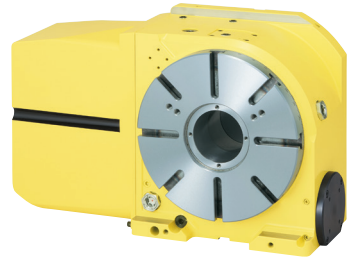


NIKKEN doesn't provide the plate



Please contact Lyndex-Nikken to confirm Brother / Nikken Rotary Table working envelope. Drawings are subject to change.

CNC260PLSA-BR3

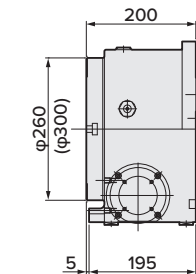
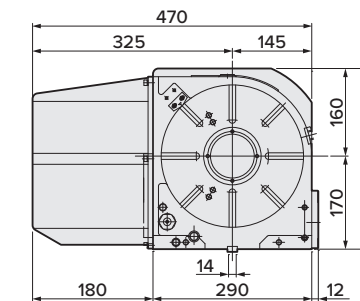
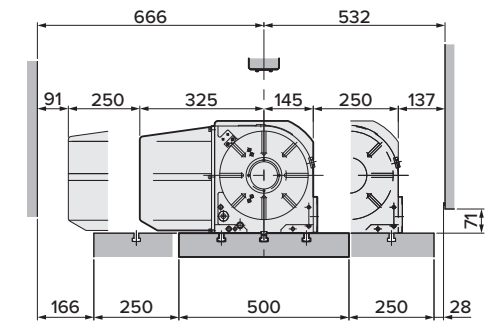
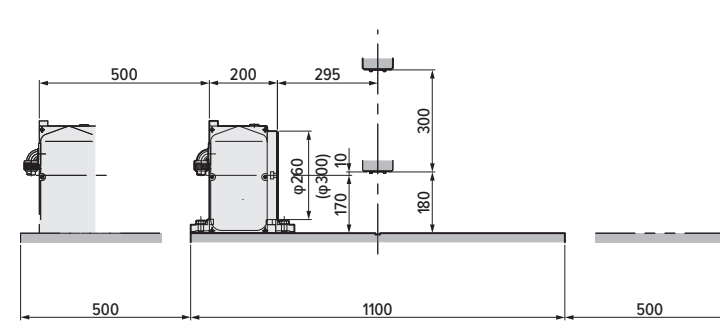
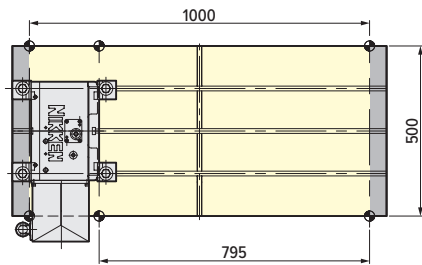


NEW

φ260mm type CNC ROTARY TABLE

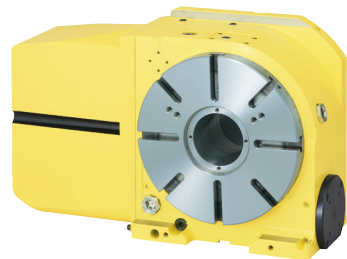
- Diameter of Table:** φ260mm (φ300mm)
- MAX. Work Load:** 300kg (Vertical) 150kg (Horizontal)
- MAX. Rotation Speed:** 25 (r/min), 50 (r/min) *1
- Indexing Accuracy:** 20sec.
- Brake Torque:** 1430Nm (Pneumatic)
- Net Weight:** 120kg
- Servo Motor:** R2AAB8100HXRGA
- Spindle Hole:** φ80mmH7X Through Hole

*1: High speed Z series



CNC302PLSA-BR3 is also available.

CNC260PLSA-BR3 (TAT-250N)

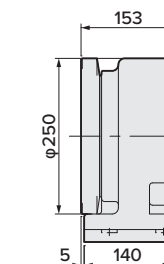
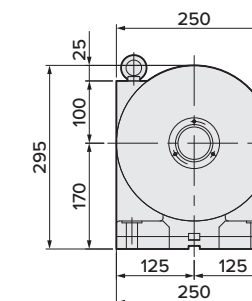
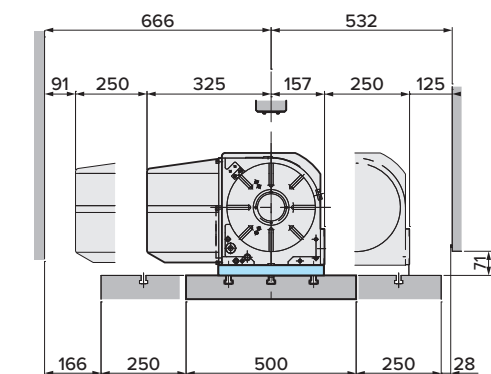
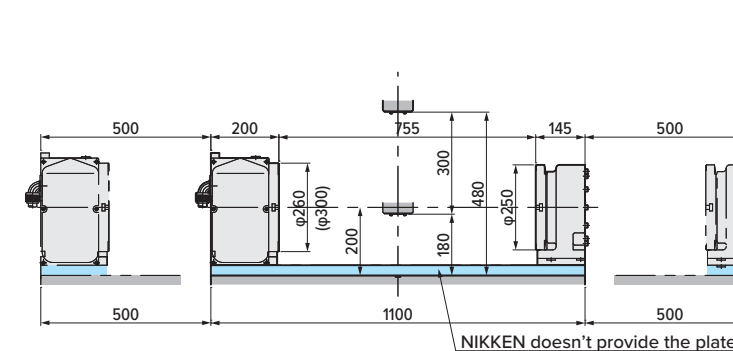
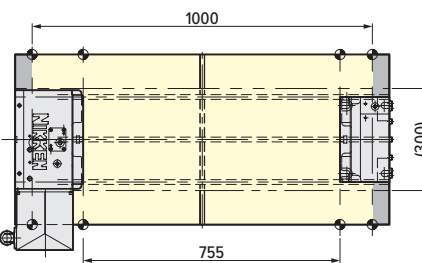


NEW

φ260mm type CNC ROTARY TABLE

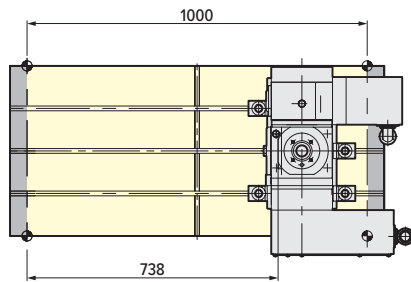
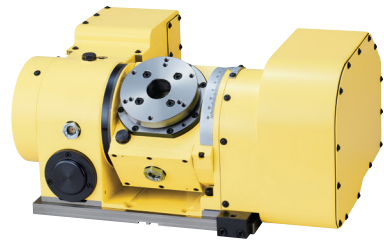
- Diameter of Table:** φ260mm (φ300mm)
- MAX. Work Load:** 300kg (Vertical) 150kg (Horizontal)
- MAX. Rotation Speed:** 25 (r/min), 50 (r/min) *1
- Indexing Accuracy:** 20sec.
- Brake Torque:** 1430Nm (Pneumatic)
- Net Weight:** 120kg
- Servo Motor:** R2AAB8100HXRGA
- Spindle Hole:** φ80mmH7 Through Hole

*1: High speed Z series



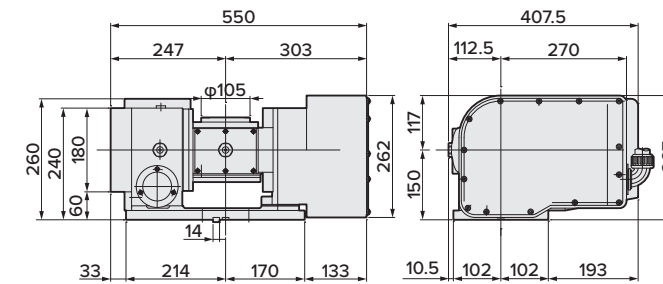
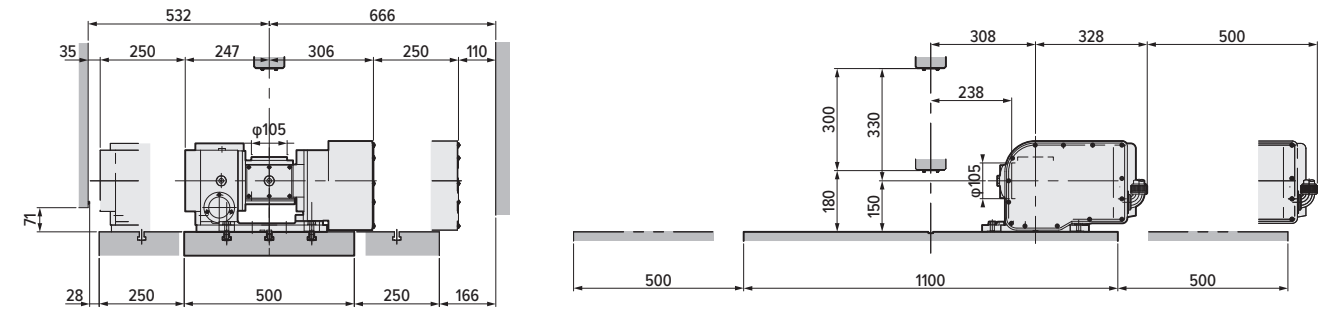
Please contact Lyndex-Nikken to confirm Brother / Nikken Rotary Table working envelope. Drawings are subject to change.

5AX-130SA-BR3

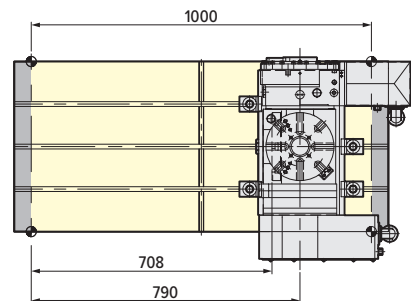
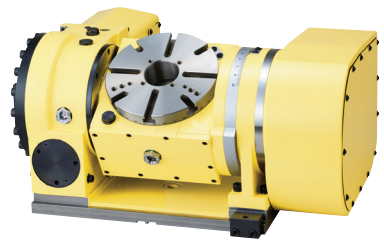


φ130mm type 5AX- TILTING ROTARY TABLE

- Diameter of Table:** φ105mm (With φ130mm sub table)
- MAX. Work Load:** 25kg (Vertical) 50kg (Horizontal)
- MAX. Rotation Speed:** 22.2 (r/min) (Rotary), 11.1 (r/min) (Tilting)
- Indexing Accuracy:** ±30sec. (Rotary), 60sec. (Tilting)
- Brake Torque:** 205Nm (Rotary), 303Nm (Tilting)
- Net Weight:** 115kg
- Servo Motor:** R2AAB8100HXRGA (Rotary)
R2AAB8100HXRGA (Tilting)
- Spindle Hole:** φ60mmH7 X φ30mm Through Hole
- Tilting Angle:** 0°~105°

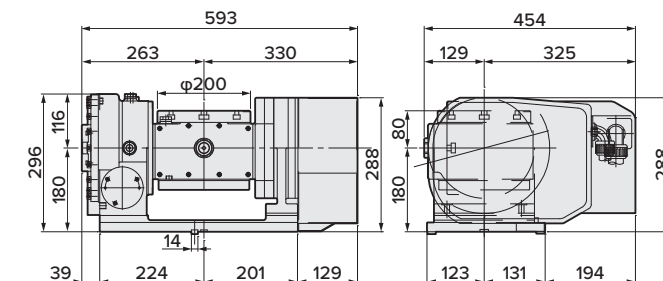
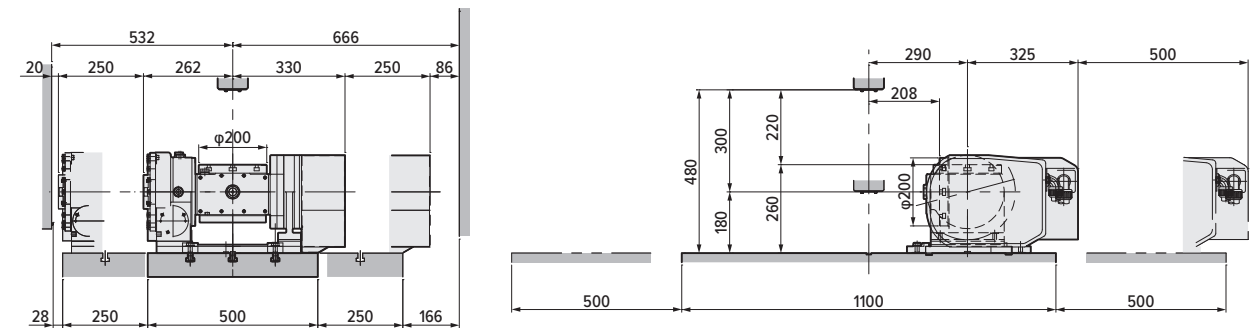


5AX-201SA-BR3



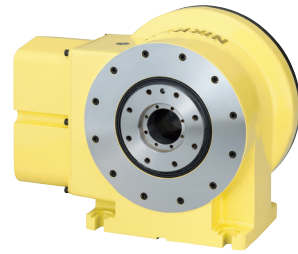
φ200mm type 5AX- TILTING ROTARY TABLE

- Diameter of Table:** φ200mm
- MAX. Work Load:** 40kg (Vertical) 60kg (Horizontal)
- MAX. Rotation Speed:** 22.2 (r/min) (Rotary), 16.6 (r/min) (Tilting)
- Indexing Accuracy:** 20sec. (Rotary), 60sec. (Tilting)
- Brake Torque:** 588Nm (Rotary), 608Nm (Tilting) (Hydraulic)
303Nm (Rotary), 303Nm (Tilting) (Pneumatic)
- Net Weight:** 160kg
- Servo Motor:** R2AAB8100HXRGA (Rotary)
R2AAB8100HXRGA (Tilting)
- Spindle Hole:** φ60mmH7 X φ50mm Through Hole
- Tilting Angle:** 0°~105°



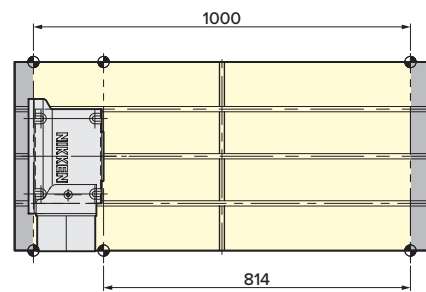
Please contact Lyndex-Nikken to confirm Brother / Nikken Rotary Table working envelope. Drawings are subject to change.

DD250LS-50



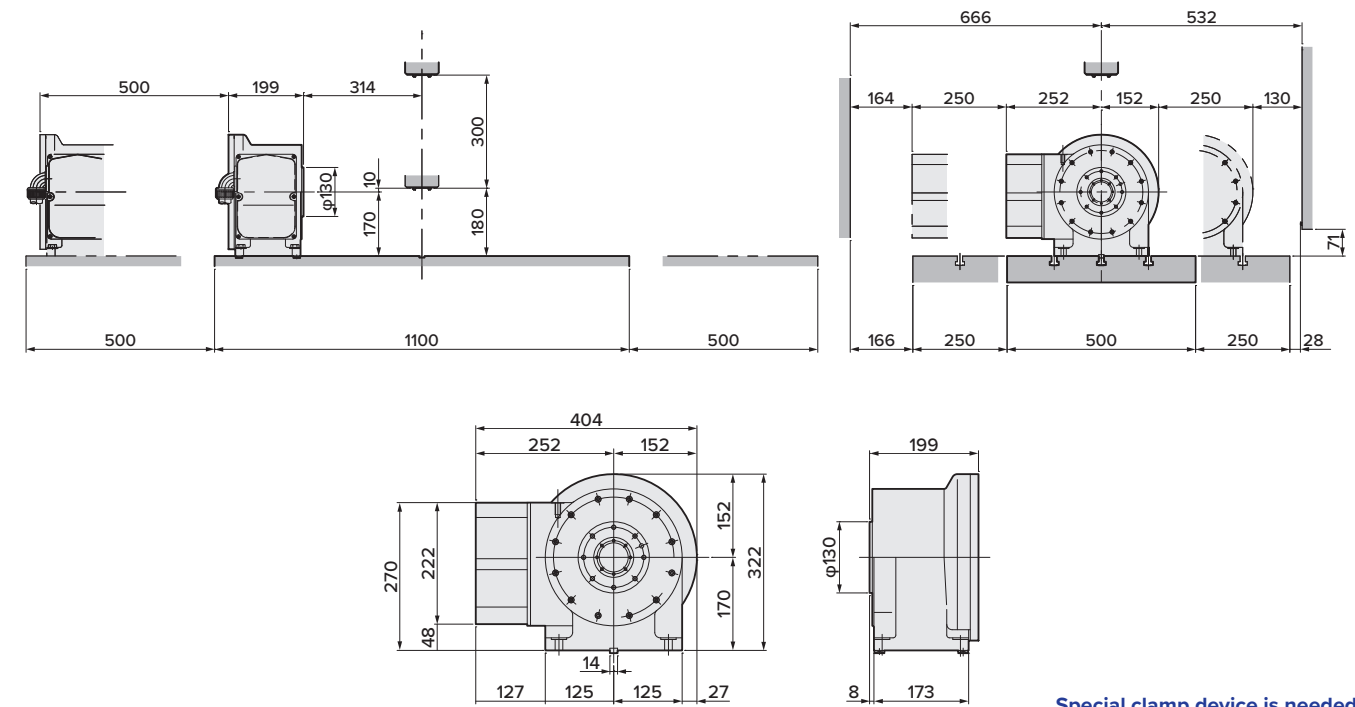
Optional
Accessory:
φ250mm sub
table 6 ports
rotary joint

*The color of DD250L-50 is white as standard.



φ250mm ROTARY TABLE with DD MOTOR

- Diameter of Table:** φ250mm (φ250mm sub table: Option)
- Spindle External Diameter:** φ130mm
- MAX. Rotation Speed:** 200 (r/min)
- Indexing Accuracy:** 15sec.
- Brake Torque:** 500Nm
- Net Weight:** 75kg
- Servo Motor:** DB23A053021W00
- Constant Torque:** 50Nm
- MAX. Torque:** 200Nm
- Spindle Hole:** φ53mm_{H7} Through Hole



Selection of the CNC Rotary Table

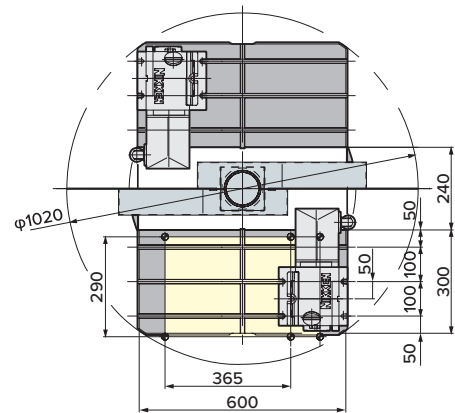
- The support table is basically used in case of vertical application.
- The machining operation is generally light cut on aluminum materials, however, if the fixture or the component is large size, please make sure that the fixture inertia is within the MAX. work inertia.
- If the unbalance load is too big, it will affect on not only the indexing accuracy but also the durability. Please make sure the unbalance load will be within the following figures.
CNC105 : 10Nm, CNC180, 202 : 20Nm, NCT200E, NCT200 : 20Nm, CNC260P, 302P : 30Nm
- In case of the unbalance load is large,
 - The high speed Z series rotary table is not suitable, please use standard rotary table.
 - Please install the balance cylinder or counter balance.
 - Please advise us the details of the component, fig fixture, indexing time etc. prior to your order, and we will make a calculation of the load and select the best suitable rotary table for your application.
- If the huge amount of coolant has to be applied, we could prepare air purge (with pneumatic pressure of 0.03MPa) on the CNC rotary table body as an option. Please contact us the details.

Check Point for Trunnion Fixture

1. When installing the table onto the sub-base, measure and check as follows.
 - Parallelism between table & sub-base is recommended within 0.01mm
 - Difference between table center and sub-base center is recommended within 0.02mm
 - Squareness of table is recommended within 0.02mm
2. Install the table & support table onto the M/C as follows.
 - Center lines are recommended within 0.02mm
 - Difference of center height is recommended within 0.01mm
3. Trunnion fixture is recommended to be aligned as follows.
 - Squareness between center line & these faces is important
 - Center of both side are recommended within 0.01mm
 - Squareness is important

Please contact Lyndex-Nikken to confirm Brother / Nikken Rotary Table working envelope. Drawings are subject to change.

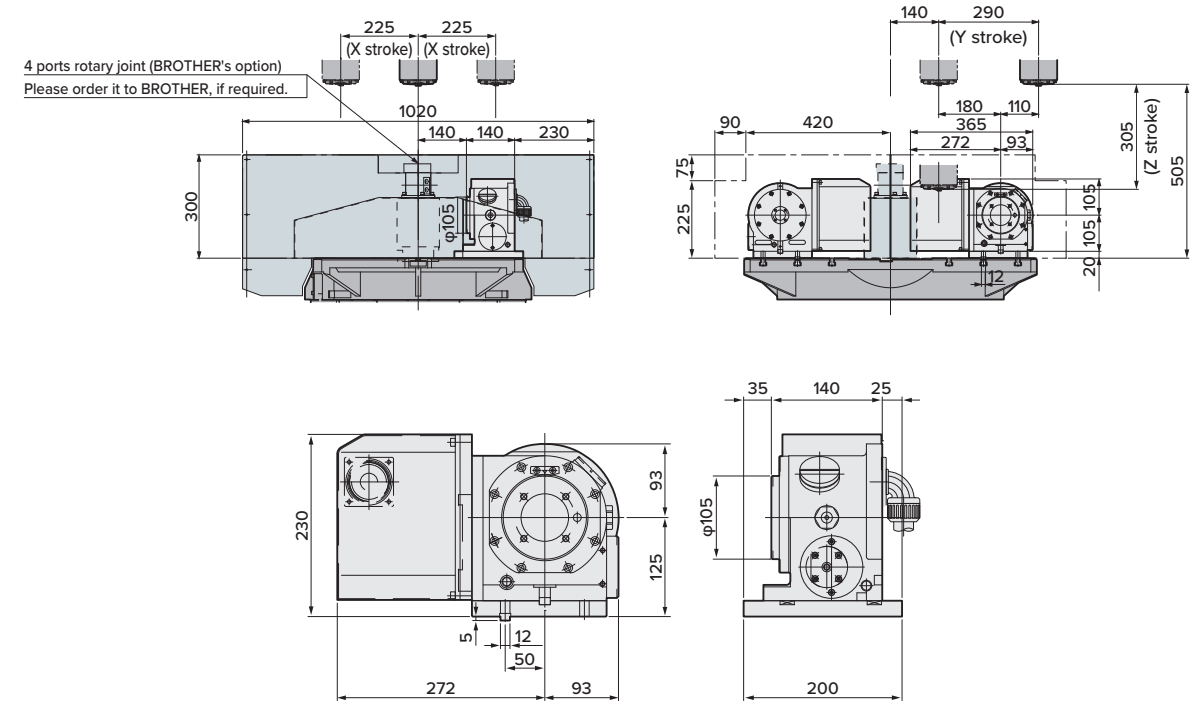
CNC105LSA-BR3



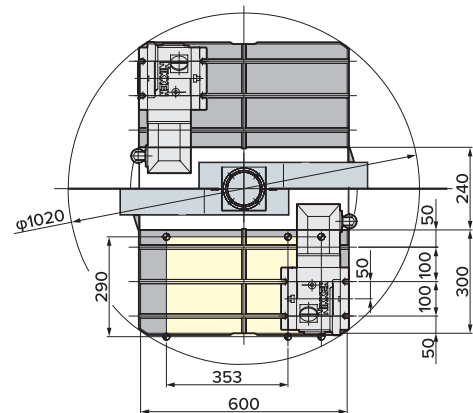
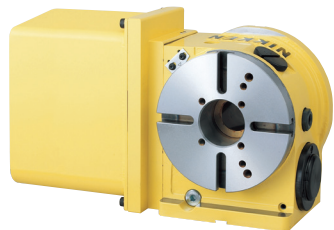
φ105mm type CNC ROTARY TABLE

- Diameter of Table:** φ105mm
- MAX. Work Load:** 30kg
- MAX. Rotation Speed:** 33.3 (r/min), 66.6 (r/min) *1
- Indexing Accuracy:** ±20sec.
- Brake Torque:** 205Nm
- Net Weight:** 30kg
- Servo Motor:** R2AAB8100HXRGA
- Spindle Hole:** φ60mmH7×φ30 Through Hole

*1: High speed Z series



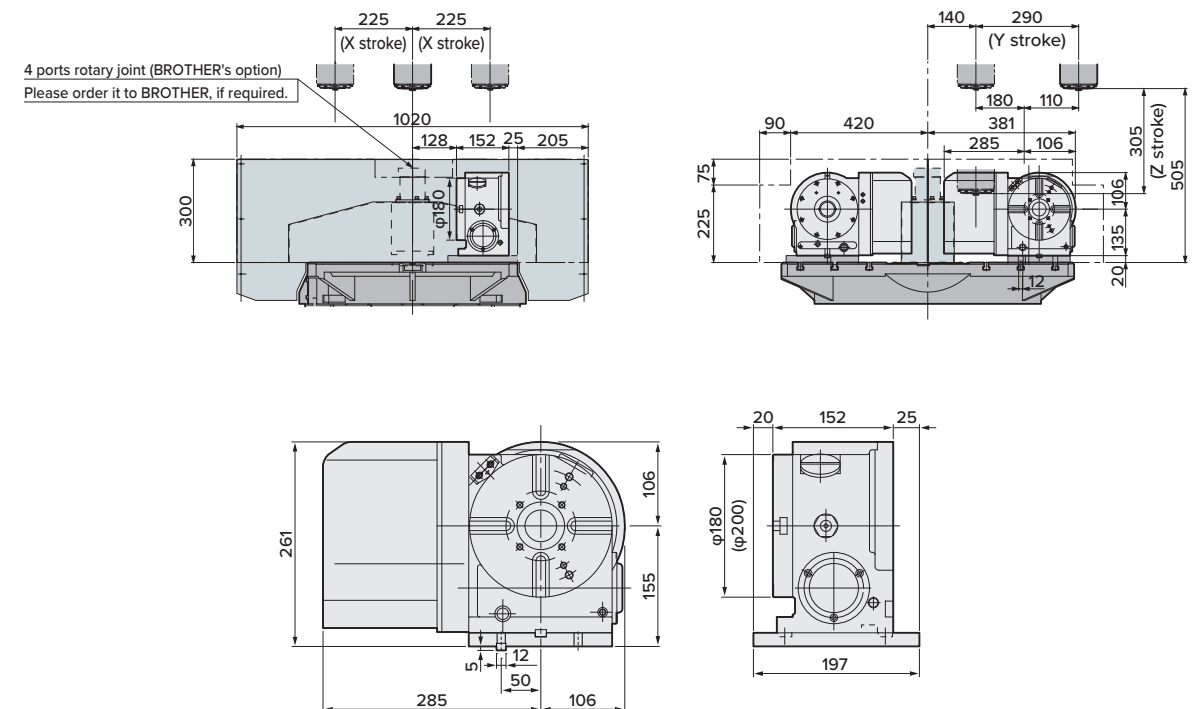
CNC180LSA-BR3



φ180mm type CNC ROTARY TABLE

- Diameter of Table:** φ180mm (φ200mm)
- MAX. Work Load:** 100kg (Vertical) 200kg (Horizontal)
- MAX. Rotation Speed:** 33.3 (r/min), 66.6 (r/min) *1
- Indexing Accuracy:** ±20sec.
- Brake Torque:** 303Nm
- Net Weight:** 48kg
- Servo Motor:** R2AAB8100HXRGA
- Spindle Hole:** φ60mmH7φ40mm Through Hole

*1: High speed Z series



CNC202LSA-BR3 is also available

Please contact Lyndex-Nikken to confirm Brother / Nikken Rotary Table working envelope. Drawings are subject to change.

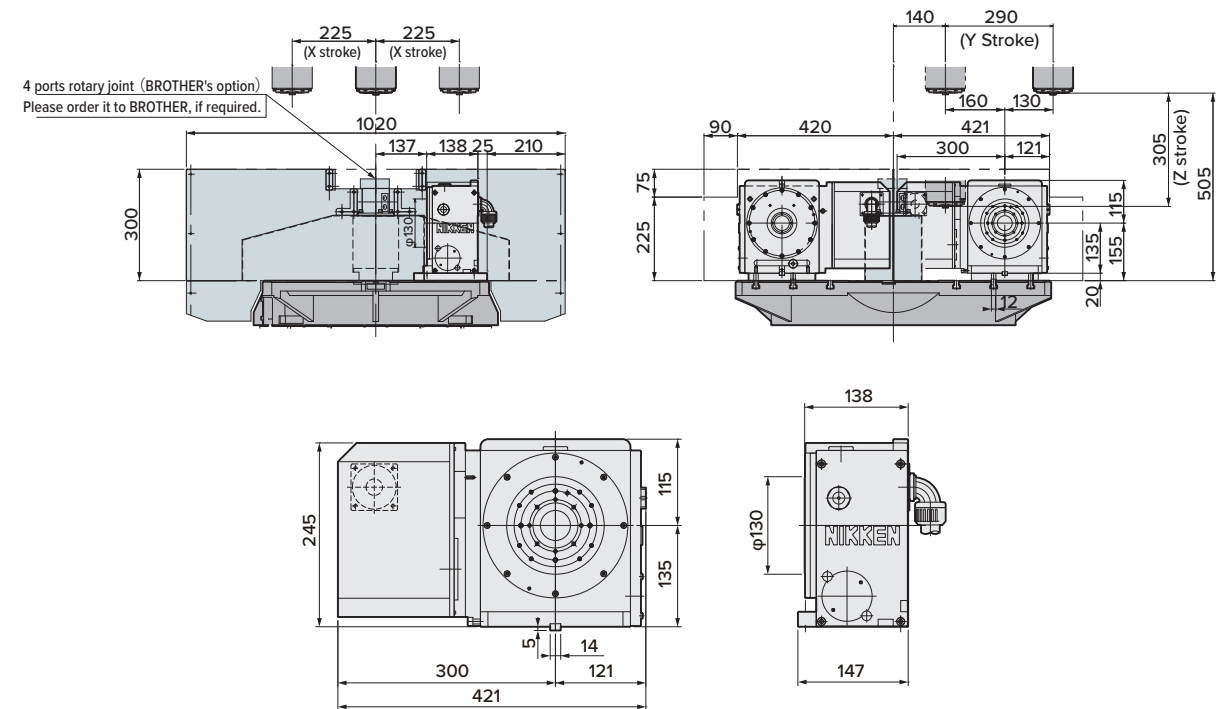
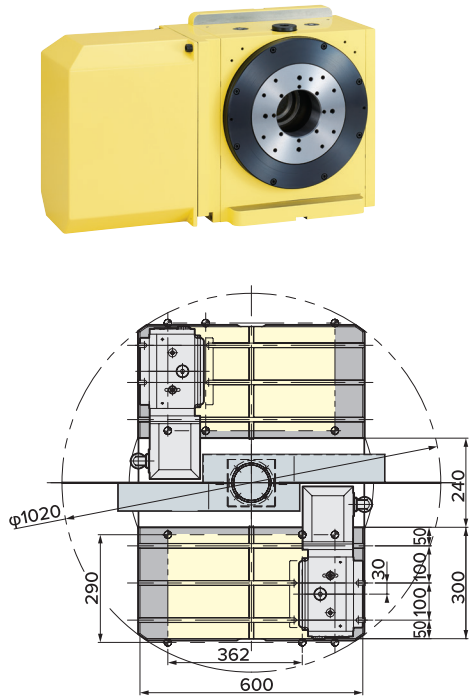
NCT200ELSA-BR3

(Without $\phi 200$ faceplate)

$\phi 200$ mm type NCT ROTARY TABLE

- Diameter of Table:** $\phi 130$ mm
- MAX. Work Load:** 100kg (Vertical) 200kg (Horizontal)
- MAX. Rotation Speed:** 33.3 (r/min), 66.6 (r/min) *1
- Indexing Accuracy:** ± 20 sec.
- Brake Torque:** 900Nm
- Net Weight:** 62kg
- Servo Motor:** R2AAB8100HXRGA
- Spindle Hole:** $\phi 60$ mmH7 X $\phi 40$ mm Through Hole

*1: High speed Z series

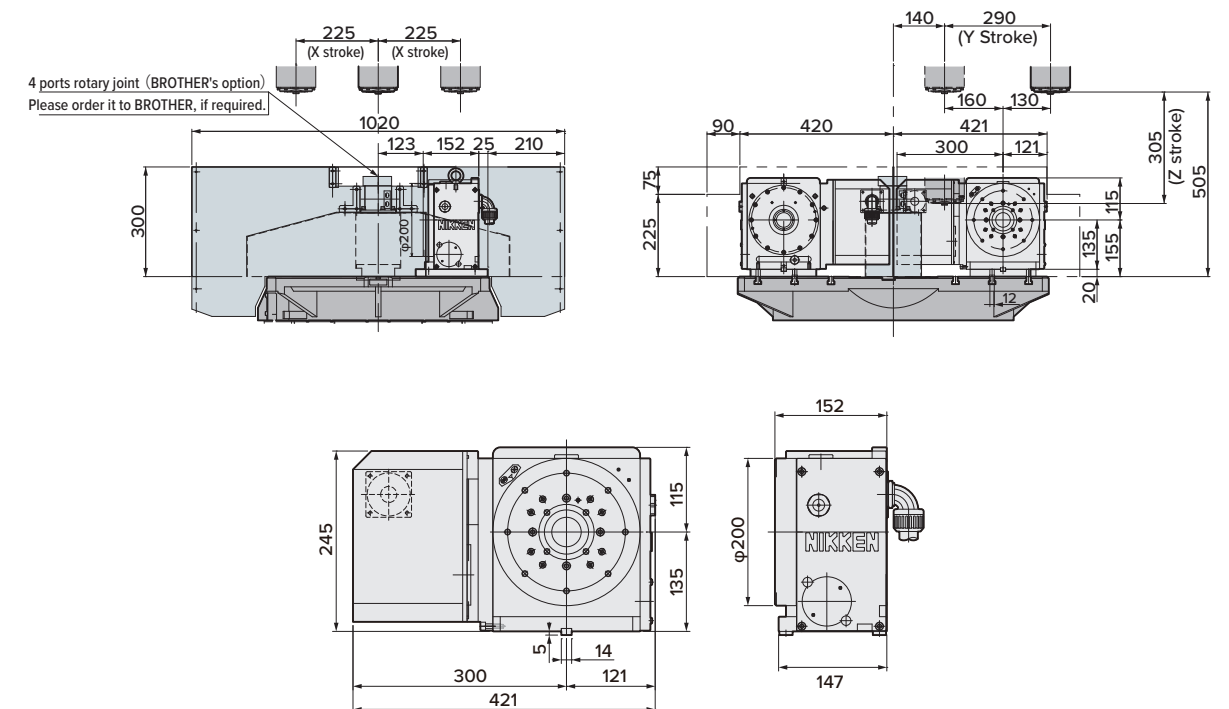
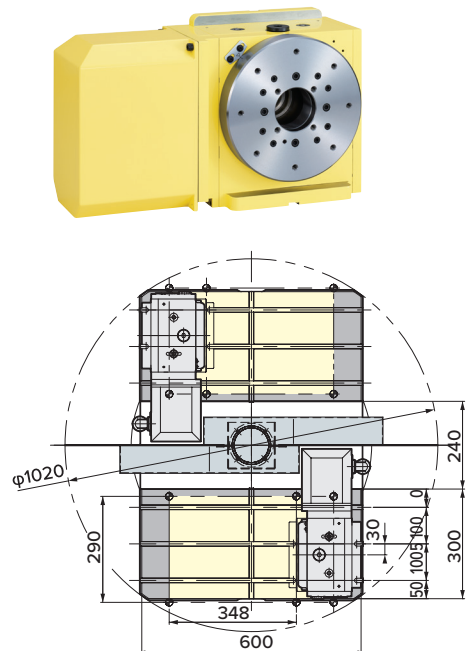


NCT200LSA-BR3

$\phi 200$ mm type NCT ROTARY TABLE

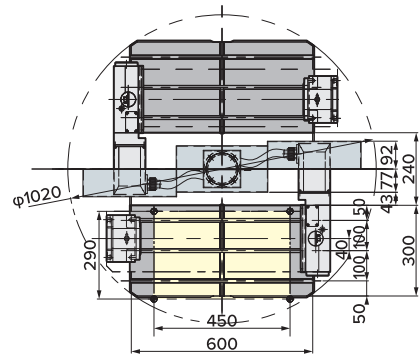
- Diameter of Table:** $\phi 200$ mm
- MAX. Work Load:** 100kg (Vertical) 200kg (Horizontal)
- MAX. Rotation Speed:** 33.3 (r/min), 66.6 (r/min) *1
- Indexing Accuracy:** ± 20 sec.
- Brake Torque:** 900Nm
- Net Weight:** 65kg
- Servo Motor:** R2AAB8100HXRGA
- Spindle Hole:** $\phi 60$ mmH7 X $\phi 40$ mm Through Hole

*1: High speed Z series



Please contact Lyndex-Nikken to confirm Brother / Nikken Rotary Table working envelope. Drawings are subject to change.

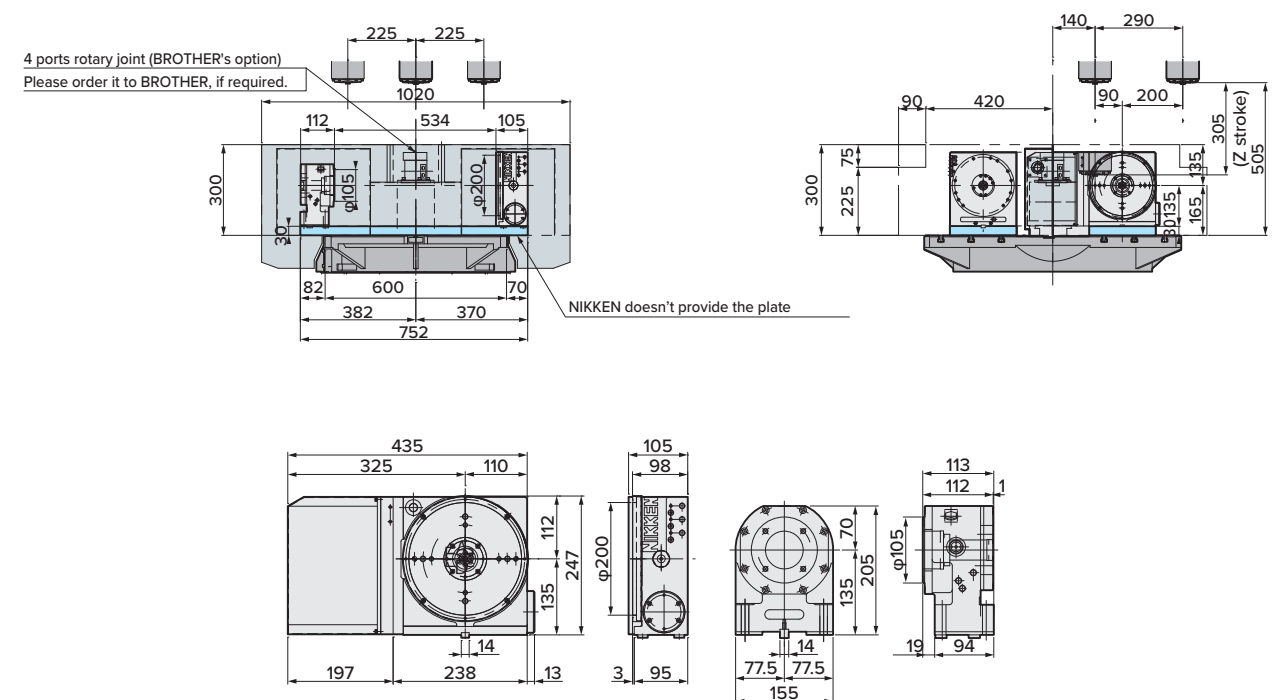
CNC205LSA-BR3 (TAT-105N-135)



φ200mm Slim type CNC ROTARY TABLE

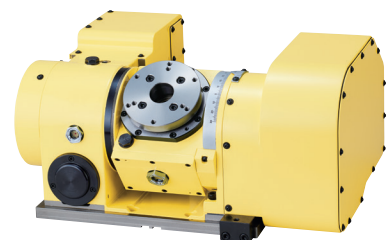
- Diameter of Table:** φ200mm
- MAX. Work Load:** 100kg (with support table)
- MAX. Rotation Speed:** 33.3 (r/min), 66.6 (r/min) *1
- Indexing Accuracy:** ±20sec.
- Brake Torque:** 380Nm
- Net Weight:** 45kg
- Servo Motor:** R2AAB8100HXRGA
- 6 ports built rotary joint can be fitted**

*1: High speed Z series

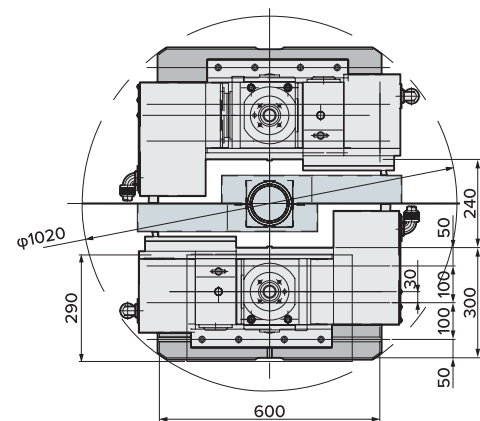


5AX- TILTING ROTARY TABLE FOR *SPEEDIO* R450XD1

5AX-130BASA-BR3



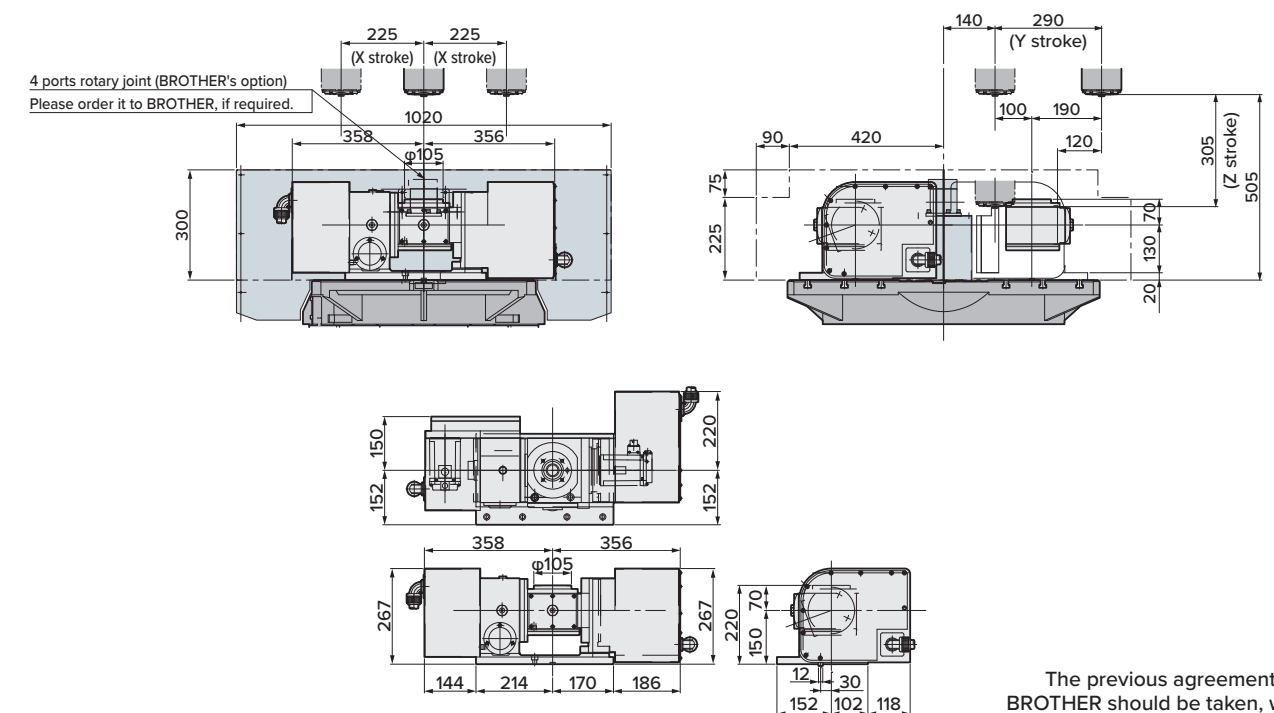
*The photo is 5AX-130SA-BR3.



φ130mm type 5AX- TILTING ROTARY TABLE

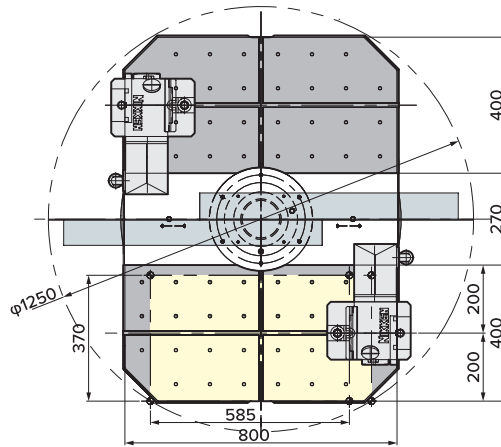
- Diameter of Table:** φ105mm (With φ130mm sub table)
- MAX. Work Load:** 25kg (Vertical) 50kg (Horizontal)
- MAX. Rotation Speed:** 33.3 (r/min) (Rotary), 11.1 (r/min) (Tilting)
- Indexing Accuracy:** ±30sec. (Rotary), 60sec. (Tilting)
- Brake Torque:** 205Nm (Rotary), 303Nm (Tilting)
- Net Weight:** 160kg
- Servo Motor:** R2AAB8100HXRGA (Rotary)
R2AAB8100HXRGA (Tilting)
- Spindle Hole:** φ60mm_{H7} X φ30mm Through Hole
- Tilting Angle:** 0°~105°

*1: High speed Z series



Please contact Lyndex-Nikken to confirm Brother / Nikken Rotary Table working envelope. Drawings are subject to change.

CNC105LSA-BR3

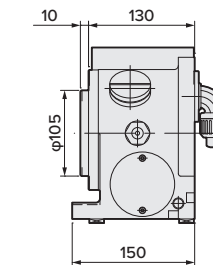
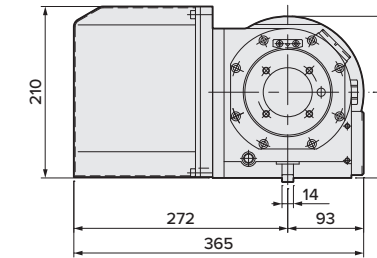
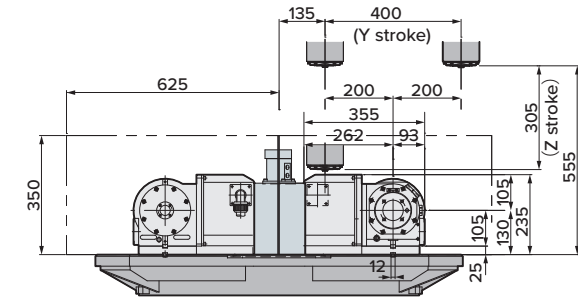
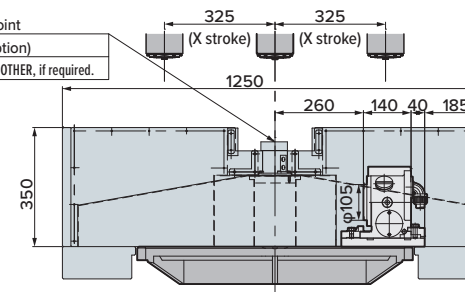


φ105mm type CNC ROTARY TABLE

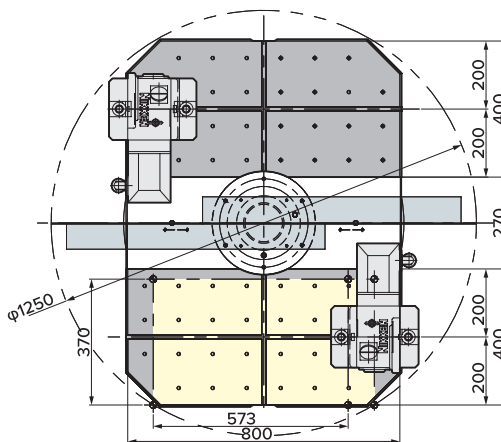
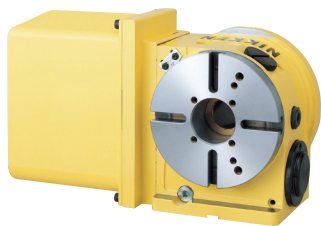
- Diameter of Table:** φ105mm
- MAX. Work Load:** 30kg
- MAX. Rotation Speed:** 33.3 (r/min), 66.6 (r/min) *1
- Indexing Accuracy:** ±20sec.
- Brake Torque:** 205Nm
- Net Weight:** 30kg
- Servo Motor:** R2AAB8100HXRGA
- Spindle Hole:** φ60mmH7Xφ30mm Through Hole

*1: High speed Z series

4 ports rotary joint
(BROTHER's option)
Please order it to BROTHER, if required.



CNC180LSA-BR3

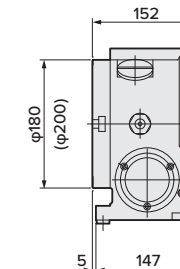
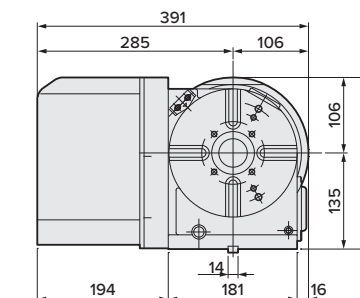
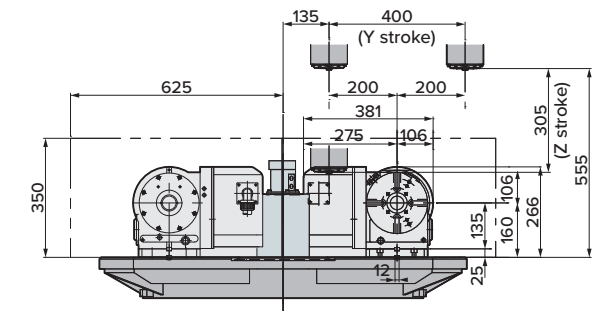
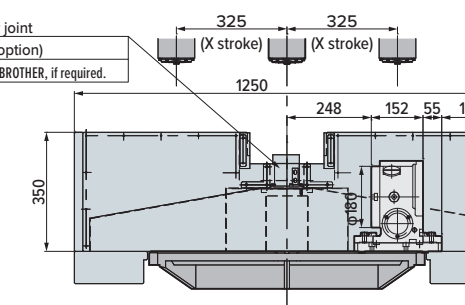


φ180mm type CNC ROTARY TABLE

- Diameter of Table:** φ180mm
- MAX. Work Load:** 100kg (Vertical) 200kg (Horizontal)
- MAX. Rotation Speed:** 33.3 (r/min), 66.6 (r/min) *1
- Indexing Accuracy:** ±20sec.
- Brake Torque:** 303Nm
- Net Weight:** 48kg
- Servo Motor:** R2AAB8100HXRGA
- Spindle Hole:** φ60mmH7Xφ40mm Through Hole

*1: High speed Z series

4 ports rotary joint
(BROTHER's option)
Please order it to BROTHER, if required.



Please contact Lyndex-Nikken to confirm Brother / Nikken Rotary Table working envelope. Drawings are subject to change.

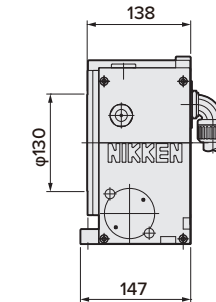
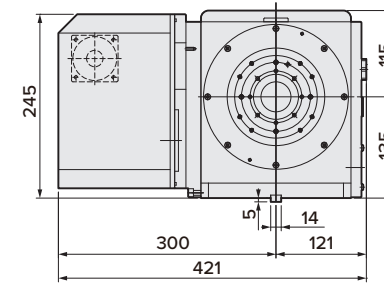
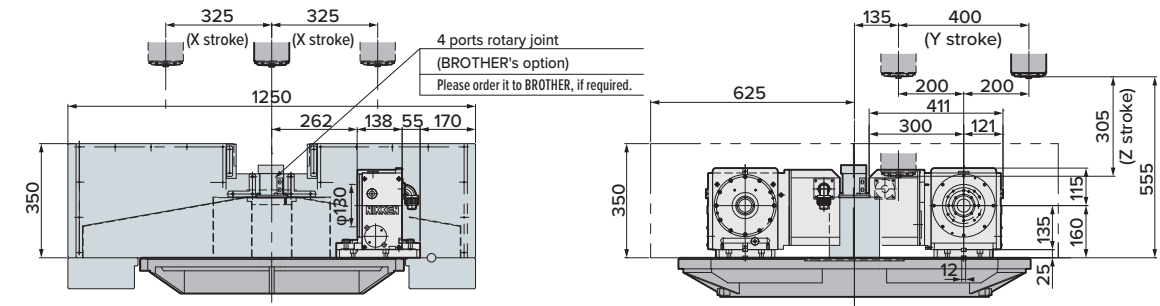
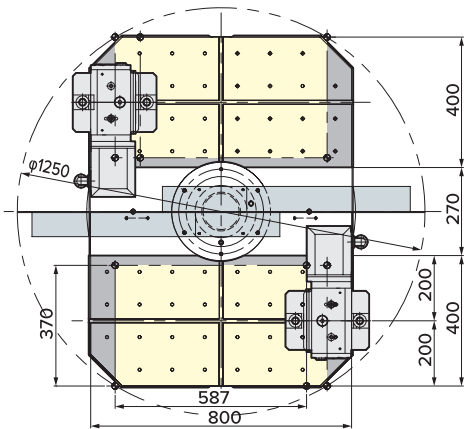
NCT200ELSA-BR3

(Without φ200 faceplate)

φ200mm type NCT ROTARY TABLE

- Diameter of Table:** φ130mm
- MAX. Work Load:** 100kg (Vertical) 200kg (Horizontal)
- MAX. Rotation Speed:** 33.3 (r/min), 66.6 (r/min) *1
- Indexing Accuracy:** ±20sec.
- Brake Torque:** 900Nm
- Net Weight:** 62kg
- Servo Motor:** R2AAB8100HXRGA
- Spindle Hole:** φ60mmH7 X φ40mm Through Hole

*1: High speed Z series

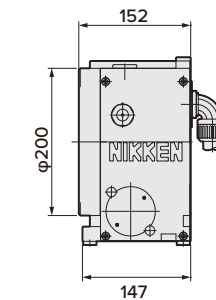
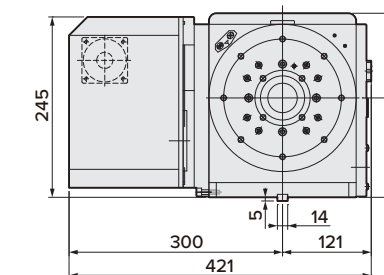
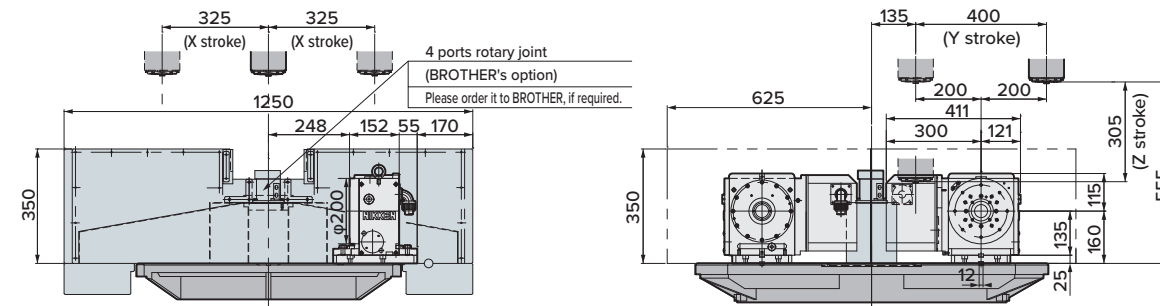
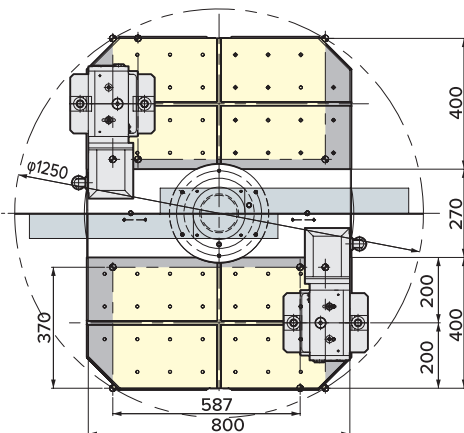


NCT200LSA-BR3

φ200mm type NCT ROTARY TABLE

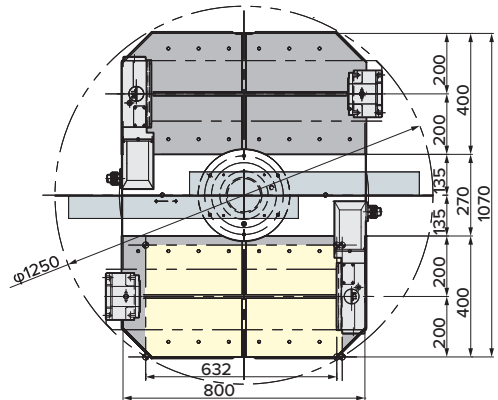
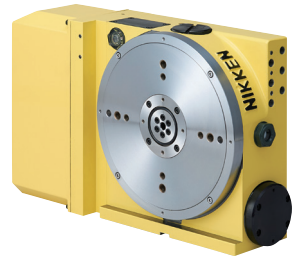
- Diameter of Table:** φ200mm
- MAX. Work Load:** 100kg (Vertical) 200kg (Horizontal)
- MAX. Rotation Speed:** 33.3 (r/min), 66.6 (r/min) *1
- Indexing Accuracy:** ±20sec.
- Brake Torque:** 900Nm
- Net Weight:** 65kg
- Servo Motor:** R2AAB8100HXRGA
- Spindle Hole:** φ60mmH7 X φ40mm Through Hole

*1: High speed Z series



Please contact Lyndex-Nikken to confirm Brother / Nikken Rotary Table working envelope. Drawings are subject to change.

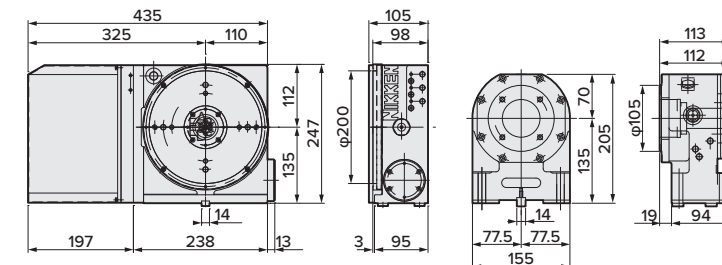
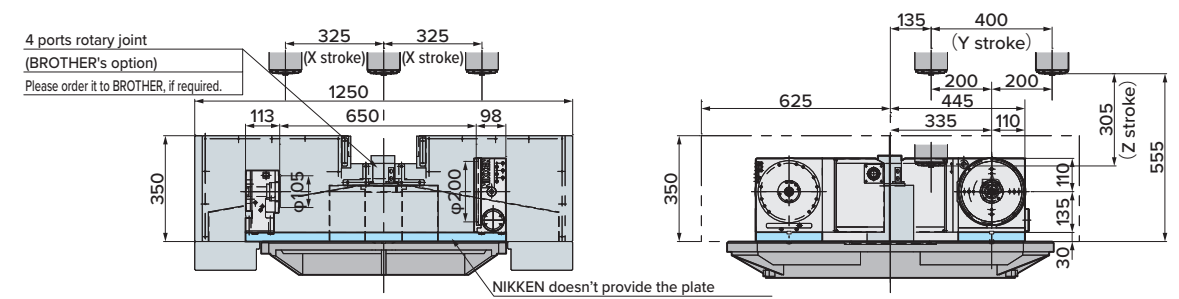
CNC205LSA-BR3 (TAT-105N-135)



φ200mm Slim type CNC ROTARY TABLE

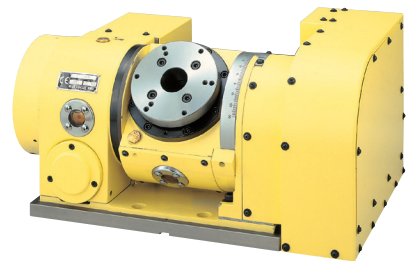
- Diameter of Table:** φ200mm
- MAX. Work Load:** 100kg (with support table)
- MAX. Rotation Speed:** 33.3 (r/min), 66.6 (r/min) *1
- Indexing Accuracy:** ±20sec.
- Brake Torque:** 380Nm
- Net Weight:** 45kg
- Servo Motor:** R2AAB8100HXRGA
- 6 ports built rotary joint can be fitted**

*1: High speed Z series

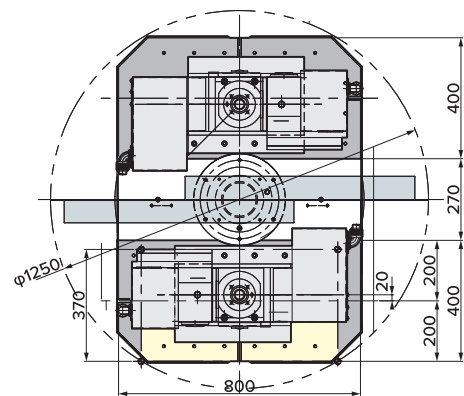


5AX- TILTING ROTARY TABLE FOR *SPEEDIO* R650XD1

5AX-130BASA-BR3

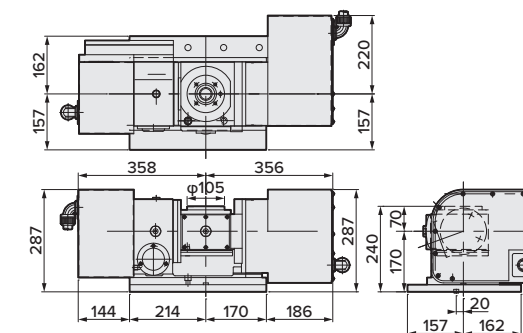
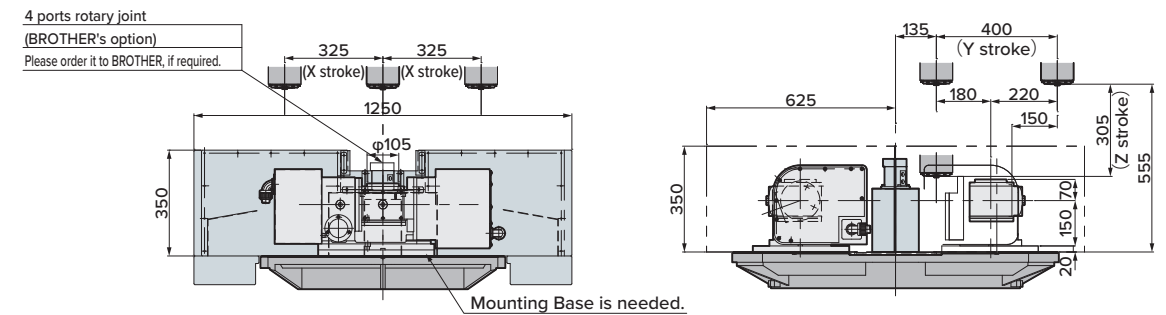


*The photo is 5AX-130SA-BR2.



φ130mm type 5AX- TILTING ROTARY TABLE

- Diameter of Table:** φ105mm (With φ130mm sub table)
- MAX. Work Load:** 25kg (Vertical) 50kg (Horizontal)
- MAX. Rotation Speed:** 33.3 (r/min) (Rotary), 11.1 (r/min) (Tilting)
- Indexing Accuracy:** ±30sec. (Rotary), 60sec. (Tilting)
- Brake Torque:** 205Nm (Rotary), 303Nm (Tilting)
- Net Weight:** 160kg
- Servo Motor:** R2AAB8100HXRGA (Rotary)
R2AAB8100HXRGA (Tilting)
- Spindle Hole:** φ60mm_{H7} X φ30mm Through Hole
- Tilting Angle:** 0°~105°



DD motor table is also possible to install to R650Xd1. Please contact us.

The previous agreement with BROTHER should be taken, when 2 set of 5AX-130 are installed.

Please contact Lyndex-Nikken to confirm Brother / Nikken Rotary Table working envelope. Drawings are subject to change.

Please note below when mounting the rotary, tilting circular table to the **SPEEDIO** series manufactured by Brother Industries, Ltd.

- If you attach an additional 1 axis table to machines exported overseas, you may need export permission from the Ministry of Economy, Trade and Industry, so please consult with the distributor.
- When attaching a rotary tilt table, it is possible to use only one axis as an additional axis, but the tilt axis requires operation with M signal. (Two axis additional axis can not be retrofitted.)

By using the NIKKEN EZ Controller or the AR21 controller as the tilt axis, it is possible to operate the tilt axis using the M signal.

Features of Nikken EZ controller and AR21 controller

- It is possible to drive the tilt axis with one M signal.
- The state-of-the-art digital servo motor & absolute encoder are used.
- Excellent acceleration / deceleration characteristics, optimized servo parameters for power-up motor torque realize high quality, high performance, super long life.
- The EZ controller adopts color liquid crystal for the pendant, and operability is improved.
- **The EZ controller can not use direct angle command.**
- The AR21 controller can **directly command the moving angle using RS232C**, and the machine's operation program can be managed collectively by the machine side. (There is a connection port of RS232C on the machine side, it will be available only when automatic input / output is possible with macro program.)



AR21 CONTROLLER
Length×Width×Height
300mm×300mm×285mm



EZ CONTROLLER
Length×Width×Height
260mm×225mm×275mm

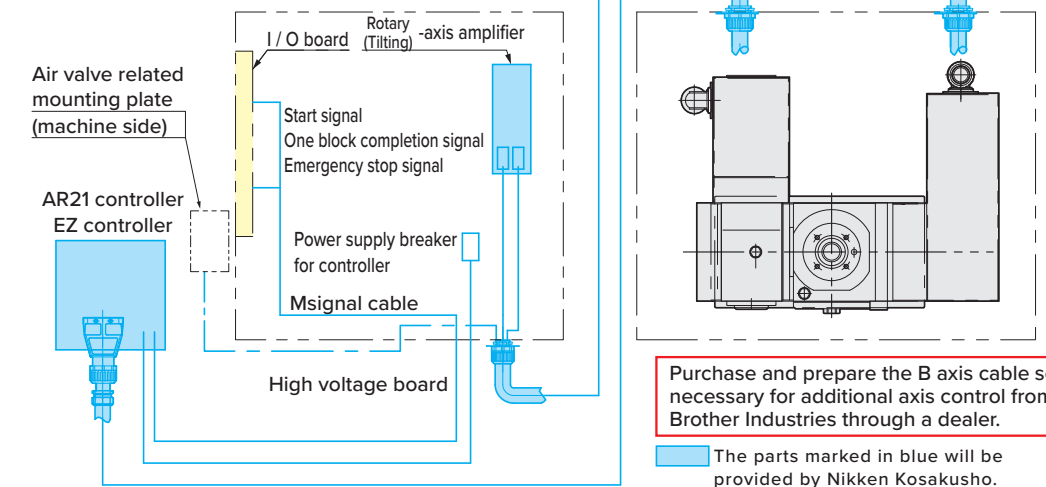
Product code with 1 axis Controller

5AX-100DEZSA-BR3-A (-B)		5AX-100DAR21SA-BR3-A (-B) -04 -08		
Diameter of Table	Product code with 1 axis controller*1	Diameter of Table	Product code with 1 axis controller*1	Controller size
100 : φ90		100 : φ90		-04 : 400W
130 : φ130 With 130mm sub table)		130 : φ130 With 130mm sub table)		-08 : 750W
201 : φ200		201 : φ200		

EZ controller size is one type.

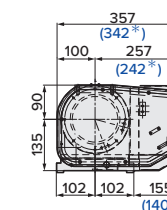
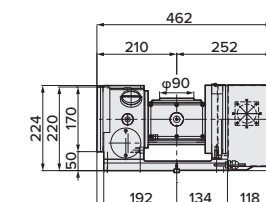
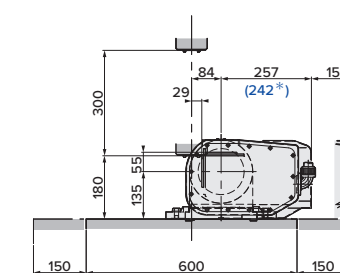
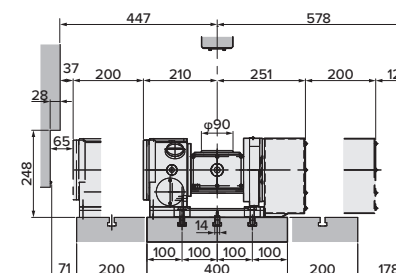
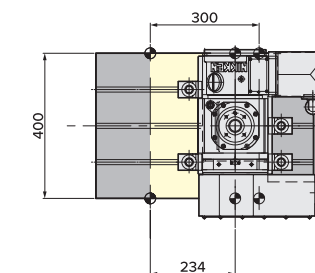
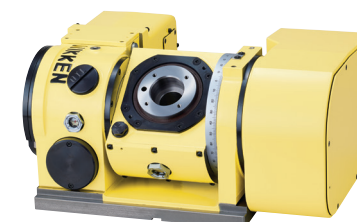
*1 In general it is common to have a tilt axis **with a controller**.
When **tilt axis** is to be attached with controller, -A
When **rotating axis** is attached with controller, it becomes -B.
Controller power supply breaker, M signal relay kit, controller fixing plate are included.

SPEEDIO wiring diagram with 1 axis controller



5AX- TILTING ROTARY TABLE FOR **SPEEDIO S300XD1**

5AX-100DEZSA-BR3-A (-B) / 5AX-100DAR21SA-BR3-A (-B) -04



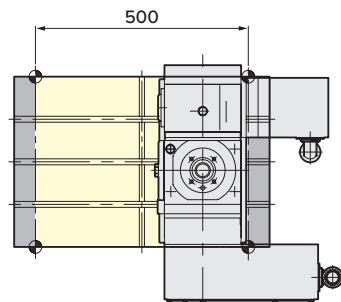
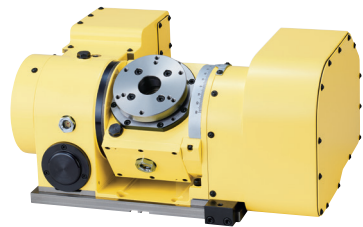
φ100mm type 5AX- TILTING ROTARY TABLE

Diameter of Table:	φ90mm
MAX. Work Load:	20kg (Vertical) 40kg (Horizontal)
MAX. Rotation Speed:	44.4 (r/min) (Rotary), 22.2 (r/min) (Tilting)
Indexing Accuracy:	±30sec. (Rotary), 60.0sec. (Tilting)
Brake Torque:	205Nm (Rotary), 600Nm (Tilting) (Hydraulic)
Net Weight:	84kg
Tilting Angle:	0°~105°

(*) Is the dimension with the AR21 controller.

The installation drawing is an example of **SPEEDIO S300 Xd1**. Please be sure to order separately for mounting drawings on other machines

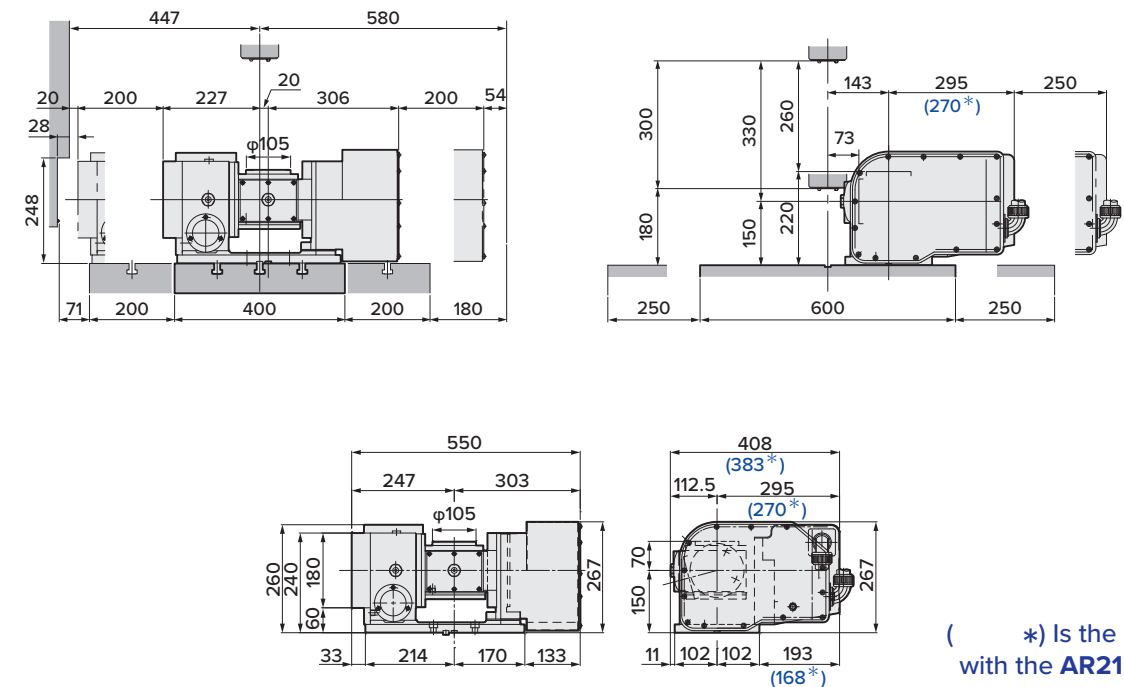
5AX-130DEZSA-BR3-A (-B) / 5AX-130DAR21SA-BR3-A (-B) -04



φ130mm type 5AX- TILTING ROTARY TABLE

Diameter of Table:	φ105mm (With φ130mm sub table)
MAX. Work Load:	25kg (Vertical) 50kg (Horizontal)
MAX. Rotation Speed:	33.3 (r/min) (Rotary), 11.1 (r/min) (Tilting)
Indexing Accuracy:	±30sec. (Rotary), 60.0sec. (Tilting)
Brake Torque:	205Nm (Rotary), 303Nm (Tilting)
Net Weight:	115kg
Tilting Angle:	0°~105°

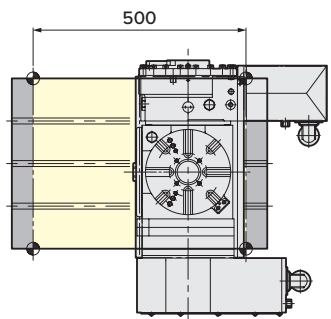
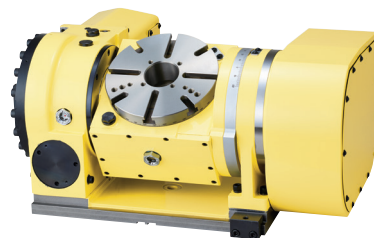
(*) Is the dimension with the AR21 controller.



(*) Is the dimension with the AR21 controller.

The installation drawing is an example of *SPEEDIO* S500Xd1. Please be sure to order separately for mounting drawings on other machines

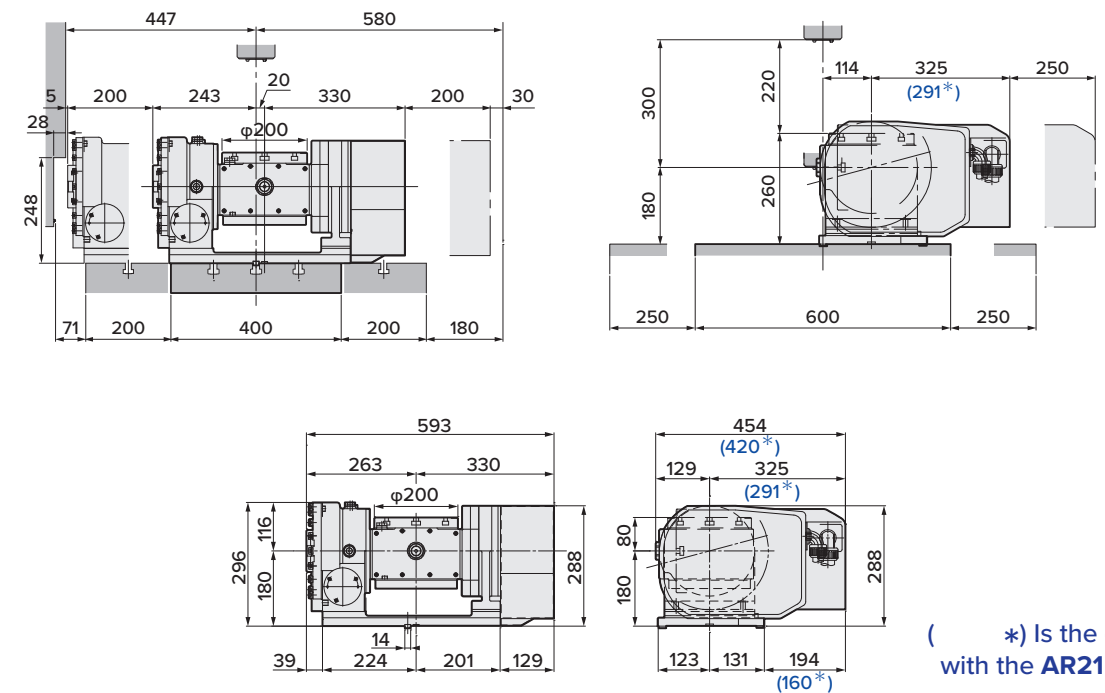
5AX-201DEZSA-BR3-A (-B) / 5AX-201DAR21SA-BR3-A (-B) -08



φ200mm type 5AX- TILTING ROTARY TABLE

Diameter of Table:	φ200mm
MAX. Work Load:	40kg (Vertical) 60kg (Horizontal)
MAX. Rotation Speed:	33.3 (r/min) (Rotary), 16.6 (r/min) (Tilting)
Indexing Accuracy:	±20sec. (Rotary), 60.0sec. (Tilting)
Brake Torque:	588Nm (Rotary), 608Nm (Tilting) (Hydraulic) 303Nm (Rotary), 303Nm (Tilting) (Pneumatic)
Net Weight:	165kg
Tilting Angle:	0°~105°

(*) Is the dimension with the AR21 controller.



(*) Is the dimension with the AR21 controller.

The installation drawing is an example of *SPEEDIO* S500Xd1. Please be sure to order separately for mounting drawings on other machines

Please contact Lyndex-Nikken to confirm Brother / Nikken Rotary Table working envelope. Drawings are subject to change.

MILLING CHUCK



BT30 MILLING CHUCKS

Code No.	D	C1	L	φ1	Spanner
BT30 -C12-55	12	33	58	58	9HC12A
-C16-55	16	44	57	65	9HC16
-C20-75	20	52	75	80	9HC22
-C25-80	25	55	82	68	9HC22
-C32-90,100	32	64	90, 100	68, 76	9HC22

BT30 INCH MILLING CHUCKS

Part No.	Collet Size	Clamping Range	Spanner Wrench	d	L	L1	D
BT30-C3/4-75*	KM3/4	0.125-0.750"	9HC22	0.750"	2.952"	3.162"	2.027"

BT30 HIGH-SPEED MILLING CHUCKS

Code No.	D	C1	L	φ1	Max. (r/min)	GH Handle
BT30 -C12-55G	12	33	58	58	40,000	GH12
-C16-55G	16	44	57	65	40,000	GH16
-C20-75G	20	52	75	80	30,000	GH20
-C25-80G	25	55	82	68	25,000	GH25
-C32-90G, 100G	32	64	90, 100	68, 76	10,000	GH32S

BT30 HIGH-SPEED INCH MILLING CHUCKS

Part No.	Collet Size	Clamping Range	High-Speed Spanner Wrench	d	L	L1	D
BT30-C3/4-75G**	KM3/4	0.125-0.750"	GH20	0.750"	2.952"	2.362"	2.047"

- * High-speed spanner wrench not included.
- ** High-speed BT30 Milling Chucks use special high-speed spanner wrenches.

STRAIGHT COLLET (KM COLLET)

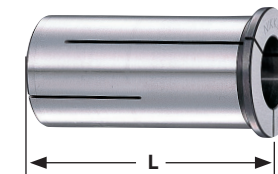
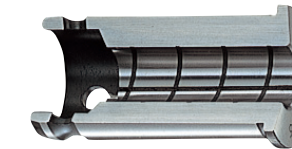


Photo shows ANNIVERSARY type KM Collet.



■ means with internal grooves for gripping strongly to eliminate the oil.

Explanation of the Code No.

KM 32 - 10

- Symbol of Collet
- OD of Collet
- ID of Collet

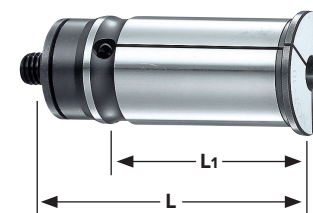
KM : Standard
NK : Adjustable
CCK : Center Coolant
CCNK : Center Coolant, Adjustable

KM

Style	L	KM Collet Code No. (OD-ID)
KM12	40	KM12 - 2, 3, 4, 5, 6, 7, 8, 9, 10 9HC12A
KM16	47.5	KM16 - 2, 3, 4, 5, 6, 7, 8, 9, 10, 11, 12
KM20	53	KM20 - 2, 3, 4, 5, 6, 7, 8, 9, 10, 11, 12, 13, 14, 15, 16
KM22	57	KM22 - 3, 4, 5, 6, 7, 8, 9, 10, 11, 12, 13, 14, 15, 16, 17, 18, 19, 20
KM25	59	KM25 - 3, 4, 5, 6, 7, 8, 9, 10, 11, 12, 13, 14, 15, 16, 17, 18, 19, 20, 21, 22
KM32	64.5	KM32 - 3, 4, 5, 6, 7, 8, 9, 10, 11, 12, 13, 14, 15, 16, 17, 18, 19, 20, 21, 22, 23, 24, 25, 26, 30
KM3/4	2.087"	KM3/4 - 1/8", 3/16", 1/4", 5/16", 3/8", 7/16", 1/2", 9/16", 5/8"

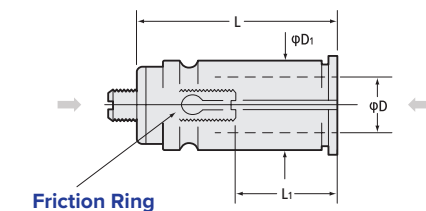
- For Synchronous Tapping Program : 5.5, 6.2, 8.5, 10.5, 12.5, 14, 15, 17, 19, 20, 23, 25, 28 Collets for Tap Shank are also available.
- Please note the acceptable shank tolerance is h6-h7.
- (): L dimension for KM42-12 or larger ID.
- Collet removal (9CKR) is an optional accessory for NC milling chuck.

STRAIGHT COLLET (NK COLLET)



Cutter length adjustment on the collet is possible from front and back.

■ means with internal grooves for gripping strongly to eliminate the oil.



NK/NKM

Style	L	L1	NK Collet Code No. (OD-ID)
NK20	63	20~40	NK20 - 3, 4, 5, 6, 7, 8, 9, 10, 11, 12, 13, 14, 15, 16
NK22	70	30~50	NK22 - 3, 4, 5, 6, 7, 8, 9, 10, 11, 12, 13, 14, 15, 16, 17, 18
NK25	68	30~55	NK25 - 3, 4, 5, 6, 7, 8, 9, 10, 11, 12, 13, 14, 15, 16, 17, 18, 19, 20, 21, 22
NK32	75	30~60	NK32 - 3, 4, 5, 6, 7, 8, 9, 10, 11, 12, 13, 14, 15, 16, 17, 18, 19, 20, 21, 22, 23, 24, 25, 26
NK42	85 (92)	30~65	NK42 - 3, 4, 5, 6, 7, 8, 9, 10, 11, 12, 13, 14, 15, 16, 17, 18, 19, 20, 21, 22, 23, 24, 25, 26, 27, 28, 29, 30, 31, 32
NK3/4	2.480"	1.968"	NK3/4 - 1/8", 3/16", 1/4", 5/16", 3/8", 7/16", 1/2", 9/16", 5/8"

- For Synchronous Tapping Program : 5.5, 6.2, 8.5, 10.5, 12.5, 14, 15, 17, 19, 20, 23, 25, 28 Collets for Tap Shank are also available.
- Other metric sizes and imperial sizes, 1/8, 1/4, 5/16, 3/8, 7/16, 1/2, 5/8, 3/4, 13/16, 7/8, 1, 1-1/8, 1-1/4, 1-1/2" are also available.
- Please note the acceptable shank tolerance is h6-h7.
- The collets with bold character are standard.
- Collet removal (9CKR) is an optional accessory for NC milling chuck.
- NK32 collets cannot be used with BT30-C32-90 and BT30-C32-90G.

SLIM CHUCK HIGH SPEED ROTATION • HIGH ACCURACY

SLIM CHUCK COLLET (SK COLLET)



SLIM CHUCK

Code No.	D	C	L	ℓ1	Collet	Spanner
BT30-SK 6-60,90,120,150	0.7~6.0	19.5	60,90,120,150	35,35,35,35	SK6	SKL-6W
-SK10-45,60,75,90,120,150	1.75~10.0	27.5	45,60,75,90,120,150	50,50,50,50,50,50	SK10	SKL-10W
-SK13-60,75,90,120	2.75~13.0	33.0	60,75,90,120	50,65,65,65	SK13	9HC12A
-SK16-60,75,90,120	2.75~16.0	40.0	60,75,90,120	60,65,65,70	SK16	9HC16
-SK20-60,75,90	3.5~20.0	48.5	60,75,90	70,75,75	SK20	9HC22
-SK25-90	7.5~25.4	55.0	90	75	SK25	9HC22

SK



HIGH-SPEED SLIM CHUCK

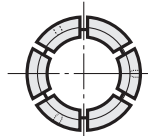
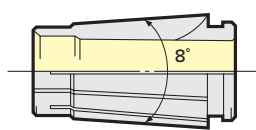
Code No.	D	C	L	ℓ1	Collet	MAX. (r/min)	GH Handle
BT30-SK 6-60,90,120,150	0.7~6.0	19.5	60,90,120	35,35,35	SK6	40K	GH6
-SK10-45,60,75,90,120,150	1.75~10.0	27.5	45,60,75,90,120,150	50,50,50,50,50,50	SK10	40K	GH10
-SK13-60,75,90,120	2.75~13.0	33.0	60,75,90,120	50,65,65,65	SK13	40K	GH12
-SK16-60,75,90,120	2.75~16.0	40.0	60,75,90,120	60,65,65,70	SK16	30K	GH16
-SK20-60,75,90	3.5~20.0	48.5	60,75,90	70,75,75	SK20	30K	GH20
-SK25-90	7.5~25.4	55.0	90	75	SK25	30K	GH25

SK-P

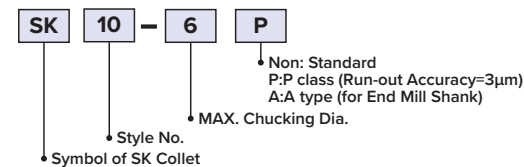
- TIN bearing nuts are supplied. Tightening spanner is not included. Please order separately.
- Also available for BT flange contact spindle (NBT30). Example NBT30-SK6C-60.
- Collets that can be used are SK collets, SK-P collets, SK-A collets and SK-AC collets.
- For adjusting screws for cutting tool protrusion adjustment, see the NC General Catalog.

SLIM CHUCK COLLET (SK COLLET)

SK



Explanation of the Code No.



“A” type SK collet (for End Mill Shank) are marked ●. The acceptable shank tolerance is hs. Code No. is e.g. SK10-10A
 “P” class SK collet (for drill) are available for all series. e.g. SK10-10P

Code No.	Chucking D
SK6 - 0.8	0.7 ~ 0.8
- 1	0.9 ~ 1.0
- 1.25	1.15 ~ 1.25
- 1.5	1.3 ~ 1.5
- 1.75	1.55 ~ 1.75
- 2	1.8 ~ 2.0
- 2.25	2.05 ~ 2.25
- 2.5	2.3 ~ 2.5
- 2.75	2.55 ~ 2.75
- 3	2.8 ~ 3.0
- 3.5	3.0 ~ 3.5
- 4	3.5 ~ 4.0
- 4.5	4.0 ~ 4.5
- 5	4.5 ~ 5.0
- 5.5	5.0 ~ 5.5
- 6	5.5 ~ 6.0
- 6.5	6.0 ~ 6.5
- 7	6.5 ~ 7.0
- 7.5	7.0 ~ 7.5
- 8	7.5 ~ 8.0
- 8.5	8.0 ~ 8.5
- 9	8.5 ~ 9.0
- 9.5	9.0 ~ 9.5
- 10	9.5 ~ 10.0
- 10.5	10.0 ~ 10.5
- 11	10.5 ~ 11.0
- 11.5	11.0 ~ 11.5
- 12	11.5 ~ 12.0
- 12.5	12.0 ~ 12.5
- 13	12.5 ~ 13.0
SK6-1/8A	0.125"
SK6-3/16A	0.187"

Inch size collets do not collapse.

Code No.	Chucking D
SK10 - 1	0.9 ~ 1.0
- 1.25	1.15 ~ 1.25
- 1.5	1.3 ~ 1.5
- 1.75	1.55 ~ 1.75
- 2	1.75 ~ 2.0
- 2.25	2.0 ~ 2.25
- 2.5	2.25 ~ 2.5
- 2.75	2.5 ~ 2.75
- 3	2.75 ~ 3.0
- 3.5	3.0 ~ 3.5
- 4	3.5 ~ 4.0
- 4.5	4.0 ~ 4.5
- 5	4.5 ~ 5.0
- 5.5	5.0 ~ 5.5
- 6	5.5 ~ 6.0
- 6.5	6.0 ~ 6.5
- 7	6.5 ~ 7.0
- 7.5	7.0 ~ 7.5
- 8	7.5 ~ 8.0
- 8.5	8.0 ~ 8.5
- 9	8.5 ~ 9.0
- 9.5	9.0 ~ 9.5
- 10	9.5 ~ 10.0
SK10-1/8A	0.125"
SK10-3/16A	0.187"
SK10-1/4A	0.250"
SK10-5/16A	0.312"
SK10-3/8A	0.375"
SK10-1/2A	0.500"
SK10-SET-07-A	7 Pcs. SK10 Collet Set 1/8 - 1/2" x 16th
SK10-SET-21-MM	21 Pcs. SK10 Collet Set 0.098 - 0.512mm SK13 Set
SK10-1/8A	0.125"
SK10-3/16A	0.187"
SK10-1/4A	0.250"
SK10-5/16A	0.312"
SK10-3/8A	0.375"
SK10-SET-05-A	5 Pcs. SK10 Collet Set 1/8 - 3/8" x 16th

Inch size collets do not collapse.

Code No.	Chucking D
SK13 - 3	2.75 ~ 3.0
- 3.5	3.0 ~ 3.5
- 4	3.5 ~ 4.0
- 4.5	4.0 ~ 4.5
- 5	4.5 ~ 5.0
- 5.5	5.0 ~ 5.5
- 6	5.5 ~ 6.0
- 6.5	6.0 ~ 6.5
- 7	6.5 ~ 7.0
- 7.5	7.0 ~ 7.5
- 8	7.5 ~ 8.0
- 8.5	8.0 ~ 8.5
- 9	8.5 ~ 9.0
- 9.5	9.0 ~ 9.5
- 10	9.5 ~ 10.0
- 10.5	10.0 ~ 10.5
- 11	10.5 ~ 11.0
- 11.5	11.0 ~ 11.5
- 12	11.5 ~ 12.0
- 12.5	12.0 ~ 12.5
- 13	12.5 ~ 13.0
SK13-1/8A	0.125"
SK13-3/16A	0.187"
SK13-1/4A	0.250"
SK13-5/16A	0.312"
SK13-3/8A	0.375"
SK13-7/16A	0.437"
SK13-1/2A	0.500"
SK13-SET-07-A	7 Pcs. SK13 Collet Set 1/8 - 1/2" x 16th
SK13-SET-21-MM	21 Pcs. SK13 Collet Set 0.098 - 0.512mm SK13 Set
SK13-1/8A	0.125"
SK13-3/16A	0.187"
SK13-1/4A	0.250"
SK13-5/16A	0.312"
SK13-3/8A	0.375"
SK13-7/16A	0.437"
SK13-1/2A	0.500"
SK13-SET-09-A	9 Pcs. SK13 Collet Set 1/8 - 5/8" x 16th

Inch size collets do not collapse.

Code No.	Chucking D
SK16 - 3	2.75 ~ 3.0
- 3.5	3.0 ~ 3.5
- 4	3.5 ~ 4.0
- 4.5	4.0 ~ 4.5
- 5	4.5 ~ 5.0
- 5.5	5.0 ~ 5.5
- 6	5.5 ~ 6.0
- 6.5	6.0 ~ 6.5
- 7	6.5 ~ 7.0
- 7.5	7.0 ~ 7.5
- 8	7.5 ~ 8.0
- 8.5	8.0 ~ 8.5
- 9	8.5 ~ 9.0
- 9.5	9.0 ~ 9.5
- 10	9.5 ~ 10.0
- 10.5	10.0 ~ 10.5
- 11	10.5 ~ 11.0
- 11.5	11.0 ~ 11.5
- 12	11.5 ~ 12.0
- 12.5	12.0 ~ 12.5
- 13	12.5 ~ 13.0
- 13.5	13.0 ~ 13.5
- 14	13.5 ~ 14.0
- 14.5	14.0 ~ 14.5
- 15	14.5 ~ 15.0
- 15.5	15.0 ~ 15.5
- 16	15.5 ~ 16.0
- 16.5	16.0 ~ 16.5
- 17	16.5 ~ 17.0
- 17.5	17.0 ~ 17.5
- 18	17.5 ~ 18.0
- 18.5	18.0 ~ 18.5
- 19	18.5 ~ 19.0
- 19.5	19.0 ~ 19.5
- 20	19.5 ~ 20.0
SK16-1/8A	0.125"
SK16-3/16A	0.187"
SK16-1/4A	0.250"
SK16-5/16A	0.312"
SK16-3/8A	0.375"
SK16-7/16A	0.437"
SK16-1/2A	0.500"
SK16-9/16A	0.562"
SK16-5/8A	0.625"
SK16-SET-09-A	9 Pcs. SK16 Collet Set 1/8 - 5/8" x 16th

Inch size collets do not collapse.

Code No.	Chucking D
SK20 - 4	3.5 ~ 4.0
- 4.5	4.0 ~ 4.5
- 5	4.5 ~ 5.0
- 5.5	5.0 ~ 5.5
- 6	5.5 ~ 6.0
- 6.5	6.0 ~ 6.5
- 7	6.5 ~ 7.0
- 7.5	7.0 ~ 7.5
- 8	7.5 ~ 8.0
- 8.5	8.0 ~ 8.5
- 9	8.5 ~ 9.0
- 9.5	9.0 ~ 9.5
- 10	9.5 ~ 10.0
- 10.5	10.0 ~ 10.5
- 11	10.5 ~ 11.0
- 11.5	11.0 ~ 11.5
- 12	11.5 ~ 12.0
- 12.5	12.0 ~ 12.5
- 13	12.5 ~ 13.0
- 13.5	13.0 ~ 13.5
- 14	13.5 ~ 14.0
- 14.5	14.0 ~ 14.5
- 15	14.5 ~ 15.0
- 15.5	15.0 ~ 15.5
- 16	15.5 ~ 16.0
- 16.5	16.0 ~ 16.5
- 17	16.5 ~ 17.0
- 17.5	17.0 ~ 17.5
- 18	17.5 ~ 18.0
- 18.5	18.0 ~ 18.5
- 19	18.5 ~ 19.0
- 19.5	19.0 ~ 19.5
- 20	19.5 ~ 20.0
SK20-1/8A	0.125"
SK20-3/16A	0.187"
SK20-1/4A	0.250"
SK20-5/16A	0.312"
SK20-3/8A	0.375"
SK20-7/16A	0.437"
SK20-1/2A	0.500"
SK20-9/16A	0.562"
SK20-5/8A	0.625"
SK20-3/4A	0.750"

Inch size collets do not collapse.

Code No.	Chucking D
SK25 - 8	7.5 ~ 8.0
- 10	9.5 ~ 10.0
- 12	11.5 ~ 12.0
- 16	15.5 ~ 16.0
- 16.5	16.0 ~ 16.5
- 17	16.5 ~ 17.0
- 17.5	17.0 ~ 17.5
- 18	17.5 ~ 18.0
- 18.5	18.0 ~ 18.5
- 19	18.5 ~ 19.0
- 19.5	19.0 ~ 19.5
- 20	19.5 ~ 20.0
- 20.5	20.0 ~ 20.5
- 21	20.5 ~ 21.0
- 21.5	21.0 ~ 21.5
- 22	21.5 ~ 22.0
- 22.5	22.0 ~ 22.5
- 23	22.5 ~ 23.0
- 23.5	23.0 ~ 23.5
- 24	23.5 ~ 24.0
- 24.5	24.0 ~ 24.5
- 25	24.5 ~ 25.0
- 25.4	25.0 ~ 25.4
SK25-3/16A	0.187"
SK25-1/4A	0.250"
SK25-5/16A	0.312"
SK25-3/8A	0.375"
SK25-7/16A	0.437"
SK25-1/2A	0.500"
SK25-5/8A	0.625"
SK25-3/4A	0.750"
SK25-SET-08-A	8 Pcs. SK25 Collet Set 3/16 - 3/4" x 16th

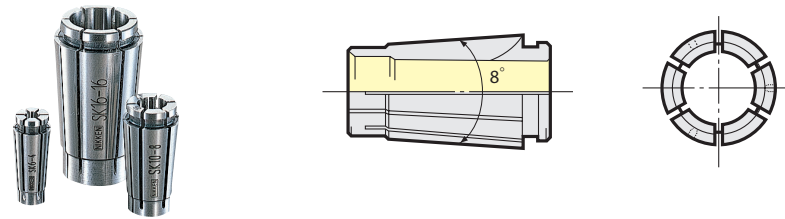
Inch size collets do not collapse.



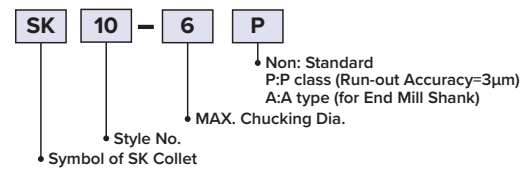
Collet removal (SKR-6) is supplied as standard only for SK6, SKR-10, SKR-16 and SKR-25 are available as an option. Collet removal is not necessary for the new types of collet (SK10 to SK25 collet including SK13 and SK20).

- Collets with special inner diameters can also be manufactured.
- When gripping a cutting tool of less than nominal size with the SK collet, please be careful that the tool protrusion will be shortened.

SLIM CHUCK COLLET (P CLASS / A TYPE COLLET)



Explanation of the Code No.



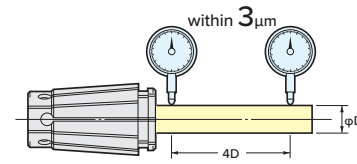
“P” class SK collet for drill

It guarantees the Run-out accuracy within 3 micron at the nose (4D) from the chuck. Additionally Collet Set is also available.

“A” type SK collet for endmill

The acceptable shank tolerance is h8.

*When using A TYPE SLIM COLLET, the L-dimension of the chuck will be shorter by about 3mm. Please be careful when you check the interference.



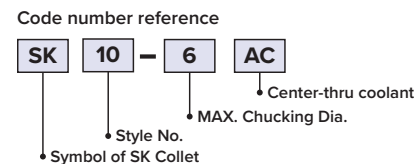
SK Collet A Type	
SK6	-3A, 4A, 5A, 6A
SK10	-3A, 4A, 5A, 6A, 8A, 10A
SK13	-3A, 4A, 5A, 6A, 8A, 10A, 12A, 13A
SK16	-3A, 4A, 5A, 6A, 8A, 10A, 12A, 16A
SK20	-4A, 5A, 6A, 8A, 10A, 12A, 16A, 20A
SK25	-8A, 10A, 12A, 16A, 20A, 25A

SK Collet A Type (Inch)	
SK6	-1/8A, 3/16A
SK10	-1/8A, 3/16A, 1/4A, 5/16A, 3/8A
SK13	-1/8A, 3/16A, 1/4A, 5/16A, 3/8A, 7/16A, 1/2A
SK16	-1/8A, 3/16A, 1/4A, 5/16A, 3/8A, 7/16A, 1/2A, 9/16A, 5/8A
SK20	-1/8A, 3/16A, 1/4A, 5/16A, 3/8A, 7/16A, 1/2A, 9/16A, 5/8A, 3/4A
SK25	-3/16A, 1/4A, 5/16A, 3/8A, 7/16A, 1/2A, 5/8A, 3/4A, 25.4A

CENTER-THRU COOLANT COLLET (SK-AC) FOR NIKKEN SLIM CHUCK

Collets with sealing function for cutting tools with oil hole.

*When using AC COLLET, the L-dimension of the chuck will be shorter by about 3mm. Please be careful when you check the interference.



SK Collet AC Type	
SK6	-3AC, 4AC, 5AC, 6AC
SK10	-3AC, 4AC, 5AC, 6AC, 7AC, 8AC, 9AC, 10AC
SK13	-4AC, 5AC, 6AC, 7AC, 8AC, 9AC, 10AC, 11AC, 12AC, 13AC
SK16	-6AC, 7AC, 8AC, 9AC, 10AC, 11AC, 12AC, 13AC, 14AC, 15AC, 16AC
SK20	-12AC, 16AC, 18AC, 20AC
SK25	-16AC, 20AC, 25AC, 25.4AC

SK Collet AC Type (Inch)	
SK6	-1/8AC, 3/16AC
SK10	-1/8AC, 3/16AC, 1/4AC, 5/16AC, 3/8AC
SK13	-1/4AC, 5/16AC, 3/8AC, 7/16AC
SK16	-1/4AC, 5/16AC, 3/8AC, 7/16AC, 1/2AC, 9/16AC, 5/8AC
SK20	-7/16AC, 1/2AC, 9/16AC, 5/8AC, 3/4AC
SK25	-3/4AC, 7/8AC

SK6-AC INCH SK10-AC INCH SK13-AC INCH SK16-AC INCH SK20-AC INCH SK25-AC INCH

Code No.	d
SK6-1/8AC	0.125"
SK10-3/16AC	0.188"

Code No.	d
SK10-1/8AC	0.125"
SK10-3/16AC	0.188"
SK10-1/4AC	0.250"
SK10-5/16AC	0.312"
SK10-3/8AC	0.375"

Code No.	d
SK13-1/4AC	0.250"
SK13-5/16AC	0.312"
SK13-3/8AC	0.375"
SK13-7/16AC	0.437"

Code No.	d
SK16-1/4AC	0.250"
SK16-5/16AC	0.312"
SK16-3/8AC	0.375"
SK16-7/16AC	0.438"
SK16-1/2AC	0.500"
SK16-9/16AC	0.563"
SK16-5/8AC	0.625"

Code No.	d
SK20-7/16AC	0.438"
SK20-1/2AC	0.500"
SK20-9/16AC	0.563"
SK20-5/8AC	0.625"
SK20-3/4AC	0.750"

Code No.	d
SK25-3/4AC	0.750"
SK25-7/8AC	0.875"

SLIM CHUCK COOLANT SOLUTION

WITH OIL HOLE DRILL		JET COOLANT SYSTEM	
<p>1 Standard Nut + SK-AC Coolant Collet</p>	<p>2 J-TYPE Nut with Standard Collet and J CAP(C)</p>	<p>3 J-TYPE Nut with Standard Collet and J CAP</p>	

• Please refer to NC catalog for coolant solutions.

MAJOR DREAM HOLDER 2LOCK



2LOCK MAJOR DREAM HOLDER

Code No.	D	C	L	P	Collet	GH Handle
NBT30-MDSK 6-50,60,75,90	3.0~6.0	19.5	50,60,75,90	35,35,35,35	SK6A, AC	GH6
-10-50,60,75,90	3.0~10.0	27.5	50,60,75,90	50,50,50,50	SK10A, AC	GH10
-13-60,75,90	3.0~13.0	33.0	60,75,90	43,60,60	SK13A, AC	GH12
-16-75,90	3.0~16.0	40.0	75,90	60,70	SK16A, AC	GH16

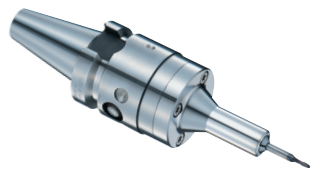


HIGH SPEED 2LOCK MAJOR DREAM HOLDER

Code No.	D	C	L	P1	Collet	MAX. (r/min)	GH Handle
NBT30-MDSK 6-50P,60P,75P,90P	3.0~6.0	19.5	50,60,75,90	35,35,35,35	SK6A, AC	30K	GH6
-10-50P,60P,75P,90P	3.0~10.0	27.5	50,60,75,90	50,50,50,50	SK10A, AC	30K	GH10
-13-60P,75P,90P	3.0~13.0	33.0	60,75,90	43,60,60	SK13A, AC	30K	GH12
-16-75P,90P	3.0~16.0	40.0	75,90	60,70	SK16A, AC	25K	GH16

• Please use A type SK collet for the end milling operation.
 • GH handle is available as an option.
 • Please refer to NC catalog for coolant solutions.

MINI-MINI CHUCK ADVANCED ALPHA



MMC

Code No.	D	D1	L	MAX. (r/min)	Wrench
BT30-MMC 4-105-AA	1.0~4.0	15.0	105	30K	EA573KL-6
-MMC 8C-105-AA	2.0~8.0	20.0	105	30K	EA573KL-6
-MMC12C-105-AA	4.0~12.0	30.0	105	30K	MMCL12-M6W

- Spanners are supplied with the mini-mini chuck. Collets are not included and must be ordered separately.
- Also available for BT flange contact spindle (NBT30). Example NBT30-MMC4C-105-AA.
- Please refer to NC catalog for coolant solutions.

DIRECT SCREW TYPE MINI-MINI CHUCK



MMC-AT

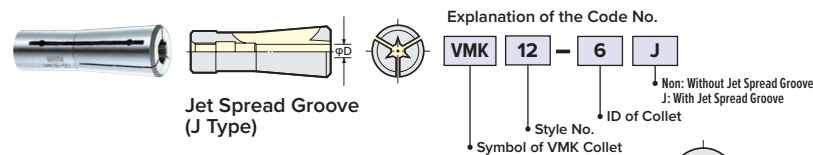
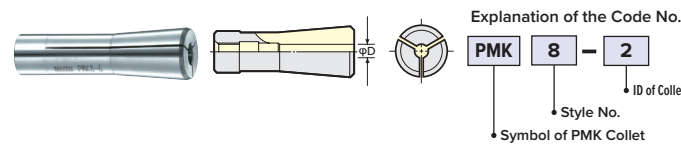
Code No.	D	D1	L	MAX. (r/min)	Wrench
BT30-MMC8C-65-AT	2.0~8.0	20.0	65	30K	EA573KL-15

- Spanners are supplied with the mini-mini chuck. Collets are not included and must be ordered separately.
- Code No. of spanner for pull-stud tightening spanner sold separately is MMCLA-BT30. Please order separately.
- Also available for BT flange contact spindle (NBT30). Example NBT30-MMC8C-65-AT.
- Please refer to NC catalog for coolant solutions.

MINI-MINI COLLET (MPK/PMK/VMK COLLET)

Standard Collet: MPK Collet / PMK Collet

For Center through tool coolant: VMK Collet/VMK-J Collet



Code No.	Min. Gripping Length
MPK 4 -1	6
-1.5	8
-2	10
-2.5	12
-3	16
-3.5	16
-4	16
-1/16	8
-3/32	10
-1/8	16

Code No.	Min. Gripping Length
PMK 8 -2	10
-2.2	10
-2.4	12
-2.6	12
-2.8	12
-3	16
-3.2	16
-3.4	16
-3.6	16
-3.8	16
-4	20
-4.2	20
-4.4	20
-4.6	22
-4.8	22
-5	22
-5.2	22
-5.4	22
-5.6	22
-5.8	22
-6	22
-6.2	22
-6.4	22
-6.6	22

Code No.	Min. Gripping Length
PMK 8 -6.8	22
-7	22
-7.2	22
-7.4	22
-7.6	22
-7.8	22
-8	22
-1/8	16
-3/16	22
PMK 12 -4	19
-5	22
-6	30
-8	31
-10	31
-12	31

Code No.	Min. Gripping Length
VMK 8 -2	10
-3	16
-4	20
-5	22
-6	22
-7	22
-8	22
-2 J	10
-3 J	16
-4 J	20
-5 J	22
-6 J	22
-7 J	22
-8 J	22
-1/8	15
-3/16	22
-1/4	22
-5/16	22
-3/8	22
-1/8 J	16
-3/16 J	22
-1/4 J	22
-5/16 J	22
-3/8 J	22

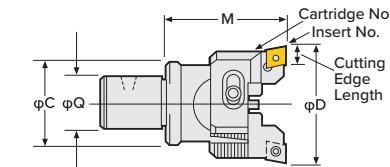
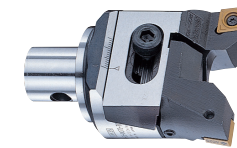
Code No.	Min. Gripping Length
VMK 12 -4	19
-5	22
-6	30
-8	31
-10	31
-12	31
-4 J	19
-5 J	22
-6 J	30
-8 J	31
-10 J	31
-12 J	31
-3/16	22
-1/4	30
-5/16	31
-3/8	31
-7/16	31
-1/2	31
-3/16 J	22
-1/4 J	30
-5/16 J	31
-3/8 J	31
-7/16 J	31
-1/2 J	31



- Please note the acceptable shank tolerance of MPK Collet is h6.
- Even the gripping range of PMK Collet is 0.2mm / dia. (e.g. PMK8-2 : 1.8~2.0) but the shank tolerance of h6 highly recommended for precision machining.
- For Center through tool Coolant type MINI-MINI Chuck:
 - Standard VMK Collet is for the cutting tool with coolant hole.
 - Please note the acceptable shank tolerance h6.
 - VMK-2J and VMK-3J will be replaced with VMK-2JB and VMK-3JB as soon as the stock is runs out.
- VMK-J Collet is for the cutting tool without Coolant hole.
- VMK8-2J is Jet Spread Hole type.

MODULAR TYPE RAC BORING HEAD

RAC-E BALANCE-CUT BORING HEAD

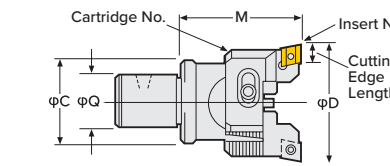
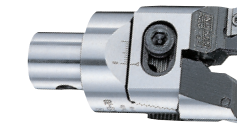


For Steel, Stainless Steel and Cast Iron CC Insert (Positive type)

Head Code No.	Boring Range D	Boring Depth M	Coupling Dia Q	C	Cartridge No.	Insert No.	Cutting Edge Length	Weight (Kg)
12-RAC 25 - 55E	25~32	55	12	24	RCC-025E	CC07	8.0	0.4
16-RAC 32 - 55E	32~45		16	31	RCC- 32E	CC08	9.7	0.5
20-RAC 43 - 70E	43~55		20	40	RCC- 43E		0.7	
26-RAC 53 - 70E	53~70	70	26	50	RCC- 53E	CC12	12.9	0.8
26-RAC 70 - 70E*	70~100				RCC- 70E		1.0	

- Code No. of RAC25 and RAC32 with CC inserts are changed to RAC25E and RAC32E. • Insert tips are supplied as an option.
- For center through coolant type, please add "-C" at the end of Code No. e.g. 26-RAC53-70E-C. • Mark: 26-RAC70-70E is not available with oil hole specification.

RAC-A BALANCE-CUT BORING HEAD



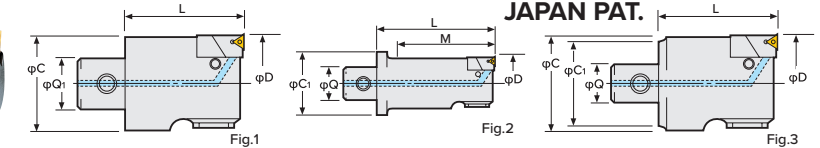
For Aluminum

Head Code No.	Boring Range D	Boring Depth M	Coupling Dia Q	C	Cartridge No.	Insert No.	Cutting Edge Length	Weight (Kg)
12-RAC 25 - 55E	25~32	55	12	24	RCC-025E	CC07	8.0	0.4
16-RAC 32 - 55E	32~45		16	31	RCC- 32E	CC08	9.7	0.5
20-RAC 43 - 70E	43~55		20	40	RCC- 43E		0.7	
26-RAC 53 - 70E	53~70	70	26	50	RCC- 53E	CC12	12.9	0.8
26-RAC 70 - 70E*	70~100				RCC- 70E		1.0	

- For center through coolant type, please add "-C" at the end of Code No. e.g. 26-RAC53-70A-C • Insert tips are supplied as an option.
- Please refer NC Total Tooling System for cutting condition. • For heavy cutting (RAC), through-hole and multi-plate (RAC-K) other than the above, please refer NC Total Tooling System.
- Mark: 26-RAC70-70A is not available with oil hole specification.

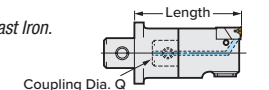
MODULAR TYPE ZMAC ADVANCED BORING HEAD

ZMAC-V TRIANGULAR INSERT TYPE HEAD




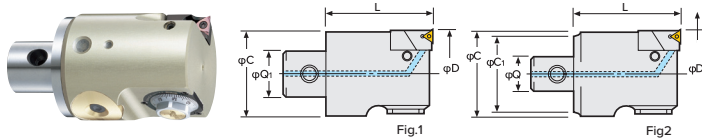
Head No.	Boring Range D	Boring Depth M	Coupling Dia Q	Remarks					Weight (Kg)
				C	C1	Unit No.	Insert No.	Fig.	
12-ZMAC 16 - 45V	15.9~20.2	38	12	15	24	M 2HZ- 16V	3MP-C,B	2	0.4
12-ZMAC 16 - 55V									0.4
9-ZMAC 20 - 40V									0.4
12-ZMAC 25 - 40V	19.8~25.2	40	9	19	-	M 3HZ- 25V	4MP-C,B	1	0.5
16-ZMAC 32 - 55V									0.7
20-ZMAC 42 - 70V	41.8~55.2	70	20	40	-	M 5HZ- 42V	6MP-C,B	1	1.1
26-ZMAC 55 - 70V									1.2

- MIN. dial readout: ZMAC25-V and smaller is 0.02mm on dia. ZMAC32-V and larger is 0.01mm on dia. • The above boring ranges are based on heads with Nose/R 0.2 insert.
- "C" grade (Coated) insert for Steel, Stainless & Cast Iron is supplied as Standard with the head (Smooth boring & Long tool-life).
- Please refer NC TOTAL TOOLING SYSTEM for cutting condition. We would recommend "B" grade (CBN) insert for Hardened Steel & High Speed boring of Cast Iron.
- Center Through Coolant function is available as standard.
- Code No. of the set with SP26 stepped spacer is Q26-Coupling Dia.-ZMAC○-LengthV e.g. Q26-20-ZMAC42-100V.



MODULAR TYPE ZMAC α ADVANCED BORING HEAD

ZMAC α -V 
TRIANGULAR
INSERT TYPE HEAD

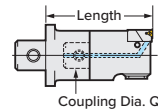


JAPAN PAT.

For High Speed Boring
Deep Hole Boring

Head No.	Boring Range D	Boring Depth M	Coupling Dia Q	Remarks					Weight (Kg)
				C	C1	Unit No.	Insert No.	Fig.	
12-ZMAC 25- 40AAV	24.8~32.2	40	12	24		M 3HZ- 25V	3MP-C,B	1	0.4
16-ZMAC 32- 55AAV	31.8~42.2	55	16	31		M 4HZ- 32V	4MP-C,B		0.5
20-ZMAC 42- 70AAV	41.8~55.2		20	40		M 5HZ- 42V			0.8
26-ZMAC 55- 70AAV	54.8~70.2	70	26	53		M 5HZ- 55V	6MP-C,B		0.7

- MIN. dial readout: ZMAC25-AAV and smaller is 0.02mm on dia. ZMAC32-AAV and larger is 0.01mm on dia. • The above boring ranges are based on heads with Nose/R 0.2 insert.
- "C" grade (Coated) insert for Steel, Stainless & Cast Iron is supplied as Standard with the head (Smooth boring & Long tool-life).
- Please refer NC TOTAL TOOLING SYSTEM for cutting condition. We would recommend "B" grade (CBN) insert for Hardened Steel & High Speed boring of Cast Iron.
- Center Through Coolant function is available as standard.
- Code No. of the set with SP26 stepped spacer is Q26-Coupling Dia.-ZMAC α LengthAAV e.g. Q26-20-ZMAC42-100AAV.



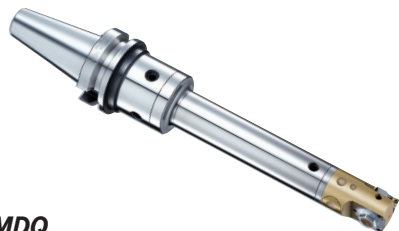
BASE HOLDER FOR MODULAR TYPE (BT SHANK)



Code No.	L	H	Coupling Dia Q
BT30 -Q 9-50	50	20	9
-Q12-65	65	40	12
-Q16-50	50	25	16
-Q20-50	50	26	20
-Q26-40	40	18	26

- All base holders have a center through tool coolant hole.
- The coupling screw & wrench are supplied as standard.
- Also available for BT flange contact spindle (NBT30). Example NBT30-Q9-50.

2LOCK MAJOR DREAM HOLDER BASE HOLDER FOR MODULAR TYPE



Code No.	L	H	Coupling Dia Q
NBT30-MDQ26-60	60	37.5	0

- All base holders are used for center through tool coolant.
- Coupling bolt and wrench are supplied as standard.
- ZMAC α -V head is recommended to use with the Major Dream base holder for anti-vibration.

MDQ

Photo shows with A1 spacer and ZMAC α -V head.

SPACER FOR MODULAR TYPE

Extension Spacer



SP

SPACER FOR MODULAR TYPE (EXTENSION SPACER)

Code No.	Coupling Dia Q	Coupling Dia Q1	Length L
SP 9 - 9-30,45	9	9	30, 45
-12-12-30,45,60	12	12	30, 45, 60
-16-16-30,45,60	16	16	30, 45, 60
-20-20-45,60	20	20	45, 60
-26-26-60,90	26	26	60, 90

Stepped Spacer



SP

SPACER FOR MODULAR TYPE (STEPPED SPACER)

Code No.	Coupling Dia Q	Coupling Dia Q1	Length L	Boring Range D
SP12 - 9-45	12	9	45	33
SP16 - 9-45	16	9	45	33
-12-60		12	60	48
SP20 - 9-45	20	9	45	33
-12-60		12	60	47
-16-60,90		16	60,90	47, 77
SP26 - 9-30,45	26	9	30, 45	15, 30
-12-30,60		12	30, 60	15, 15
-16-30,60, 90		16	30, 60, 90	15, 45, 75
-20-30,60,100		20	30, 60, 100	18, 48, 88

A1 Spacer for Deep Hole



SP

SPACER FOR MODULAR TYPE (A1 SPACER FOR DEEP HOLE)

Code No.	Coupling Dia Q	Coupling Dia Q1	Length L	Boring Range D
SP26 - 9- 85-A1	26	9	85	70
-12-115-A1		12	115	100
-16-140-A1		16	140	125
-20-180-A1		20	180	165
-26-190-90		26	190	190

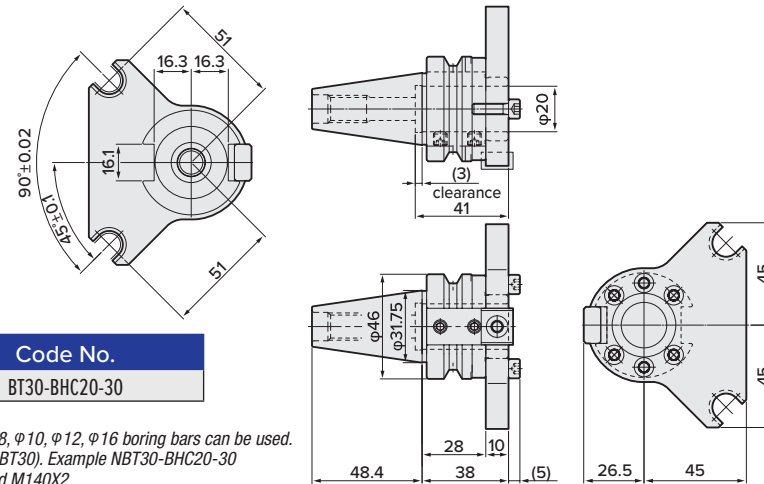
- All base holders have a center through tool coolant hole.
- The coupling screw & wrench are supplied as standard.

TURNING TOOLING SYSTEM FOR M200X3 / M300X3 COLLET)

(BORING BAR HOLDER)

BORING BAR HOLDER (Φ20):

For Internal boring



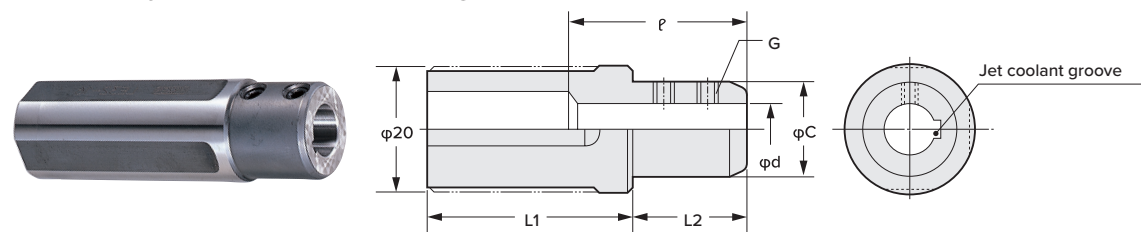
With boring bar sleeve shown.

Cutting Direction	Code No.
Neutral	BT30-BHC20-30

- Coolant through spindle (CTS) can be used.
- With boring bar sleeve (sold separately) Φ6, Φ8, Φ10, Φ12, Φ16 boring bars can be used.
- Also available for BT flange contact spindle (NBT30). Example NBT30-BHC20-30
- This holder can also be used with M140X1 and M140X2.

BORING BAR SLEEVE FOR BT30-BHC20-30 (Φ6, Φ8, Φ10, Φ12, Φ16):

Standard type: suitable for boring bars without oil holes

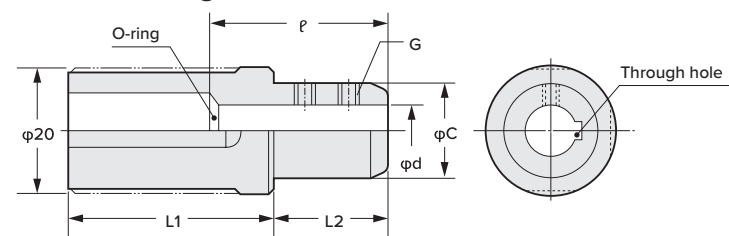


Code No.	d	C	L1	L2	ρ	G
LEA20S- 6	6	18			32~67	9SLG5P0.5-5
8	8	19.5	26	41	36~67	9SLG6P0.75-6
10	10				41~67	9SLG6P0.75-5
12	12	27	10		45~67	M6-8L
16	16	24.5	35		30	9SLG6P0.75-5

• The coolant is discharged through a jet coolant groove in the bore of the boring bar sleeve.

BORING BAR SLEEVE FOR BT30-BHC20-30 (Φ6, Φ8, Φ10, Φ12, Φ16):

Coolant through type: suitable for boring bars with oil holes



Code No.	d	C	L1	L2	ρ	G
LEA20S- 6C	6	18			32	9SLG5P0.5-5
8C	8	19.5	26	41	36	9SLG6P0.75-6
10C	10				45	9SLG6P0.75-5
12C	12	27	10		45	M6-8L
16C	16	24.5	35		30	9SLG6P0.75-5

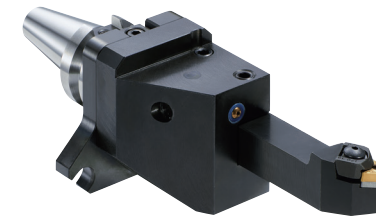
• The coolant is supplied reliably to the oil hole in the boring bar by means of an O-ring on the end face at the back of the bore.

TURNING TOOLING SYSTEM FOR M200X3 / M300X3

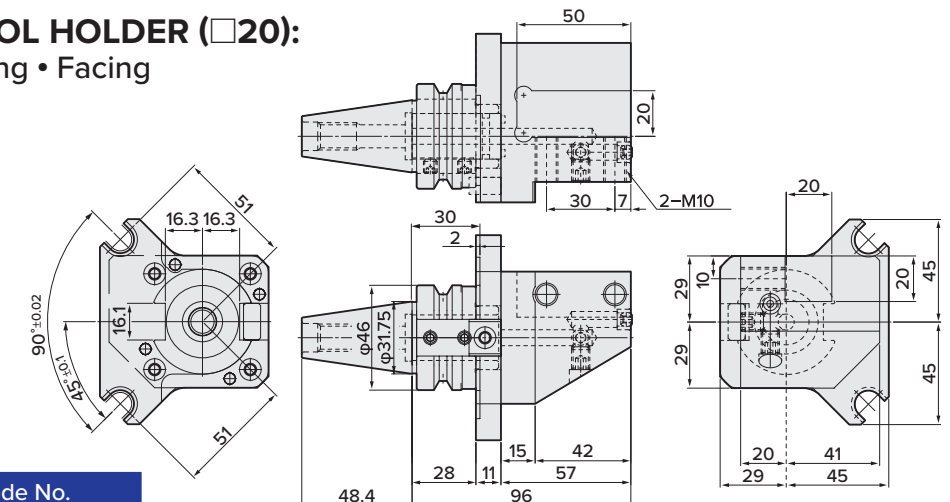
(EXTERNAL TURNING TOOL HOLDER)

EXTERNAL TURNING TOOL HOLDER (□20):

180° Type / for External turning • Facing



Right hand tool holder shown.

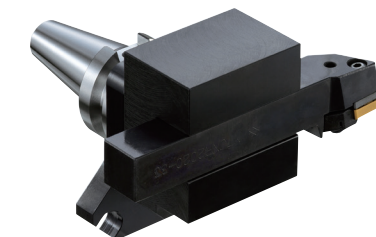


Cutting Direction	Code No.
Left	BT30-BHS20-96-X2-L
Right	BT30-BHS20-96-X2-R

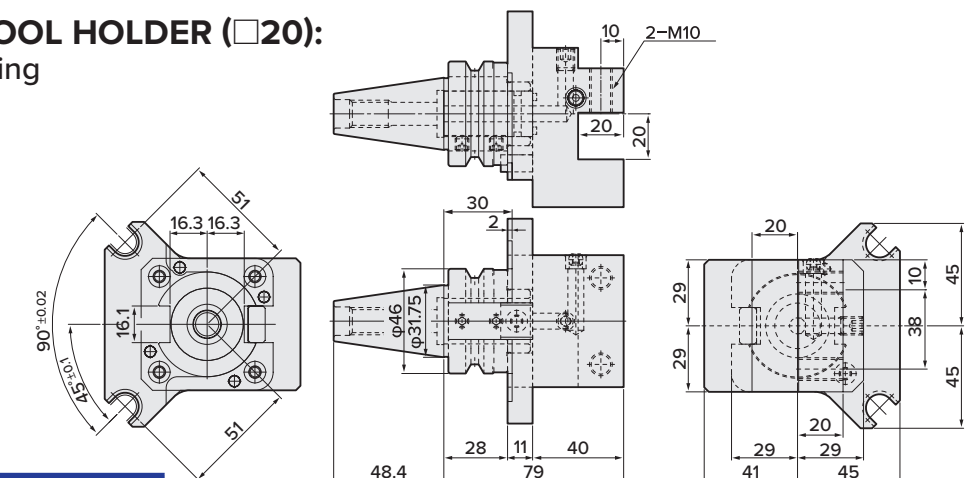
- Coolant through spindle (CTS) can be used.
- The coolant discharge direction can be adjusted by means of a variable nozzle.
- Also available for BT flange contact spindle (NBT30). Example NBT30-BHS20-96-X2-L.
- This holder can also be used with M140X1 and M140X2.

EXTERNAL TURNING TOOL HOLDER (□20):

90° Type / for External turning



Left hand tool holder shown.



Cutting Direction	Code No.
Left	BT30-BHSH20-79-X2-L
Right	BT30-BHSH20-79-X2-R

- Coolant through spindle (CTS) can be used.
- The coolant discharge direction can be adjusted by means of a variable nozzle.
- Also available for BT flange contact spindle (NBT30). Example NBT30-BHSH20-79-X2-L.
- This holder can also be used with M140X1 and M140X2.

ABOUT US

At Lyndex-Nikken, we have made it our mission to provide the two most important points to keep you ahead of the competition: advanced technology and the innovation to keep it moving forward. In addition to manufacturing the best machine tool accessories available on the market, our team of highly experienced technicians and product specialists offers unmatched customer service and engineering support to our customers worldwide.



1468 Armour Boulevard | Mundelein, IL 60060
Phone: 847.367.4800 | Fax: 847.367.4815 | sales@lyndexnikken.com
lyndexnikken.com

